



Now also available with
225mm mounting height

Recessed lock jaw
to assist safe coupling



Guide bars for king pin



Fully supported locking bar



Optional Fleetmaster Handle
(allowing the operator to access
the spring clip more easily)



Light-weight, versatile, proven

- 2" fifth wheel coupling, weight-optimised in pressed steel design
- Suitable for all types of forced steering systems
- Large rubber cushioned pivot bearings
- Adjustable wear control
- Replaceable wear ring for extended unit life
- Fully automatic handle locking catch with optional spring hook and chain as an additional safety feature
- Guide bars in throat to correctly position king pin
- Fixed and slider options including direct mount to JSL and EVM slider
- Available with 3 sensor technology
- ECE 55-01 Approval

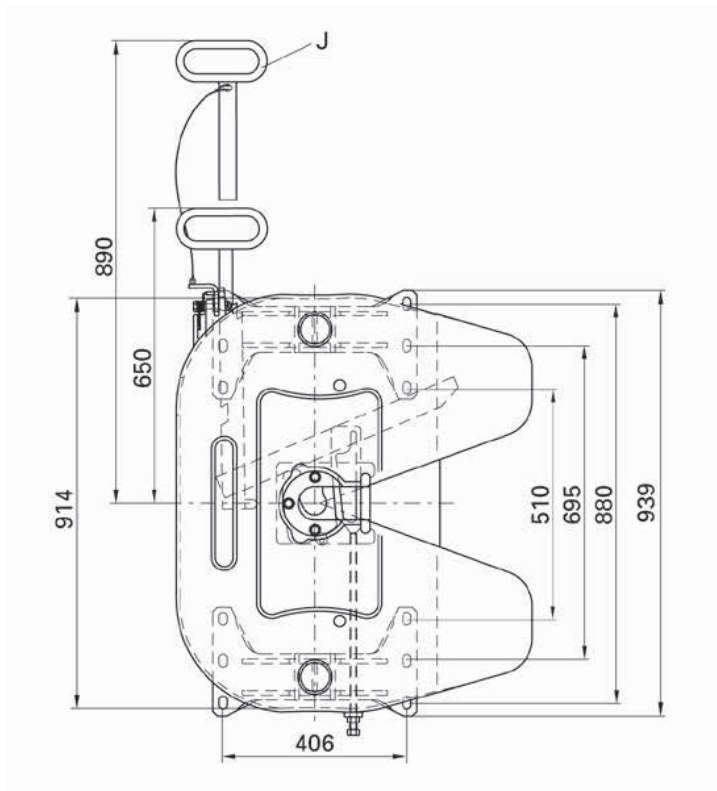
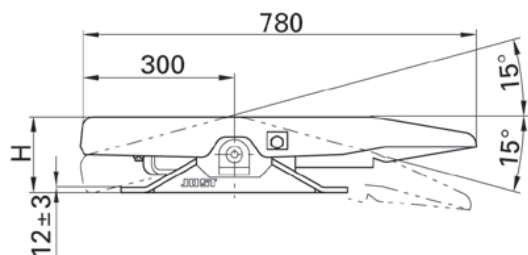
available with



JSK 36DV

Technical Specification

2" fifth wheel coupling



Order No.	H (mm)	D value (kN)	Imposed load U (t)	Weight (kg)	Approval (ECE)	ZL	Sensoric
JSK 36 DV2	150	152	20	119.0	E1 55R-01 0301	K	-
JSK 36 DV2 J	150	152	20	119.0	E1 55R-01 0301	J	-
JSK 36 DV 20 C6 AA	150	152	20	122.0	E1 55R-01 0301	J	ST*
JSK 36 DV1	172	152	20	122.0	E1 55R-01 0301	K	-
JSK 36 DV1 J	172	152	20	122.0	E1 55R-01 0301	J	-
JSK 36 DV 31 C6 AA	172	152	20	125.0	E1 55R-01 0301	J	ST*
JSK 36 DV3	185	152	20	124.0	E1 55R-01 0301	K	-
JSK 36 DV3 J	185	152	20	124.0	E1 55R-01 0301	J	-
JSK 36 DV 38 C6 AA	185	152	20	127.0	E1 55R-01 0301	J	ST*
JSK 36 DV17 G	205	152	20	125.0	E1 55R-01 0301	K	-
JSK 36 DV17 GJ	205	152	20	125.0	E1 55R-01 0301	J	-
JSK 36 DV 47 C6 AA	205	152	20	128.0	E1 55R-01 0301	J	ST*
JSK 36 DV16	225	152	20	128.0	E1 55R-01 0301	K	-
JSK 36 DV16 J	225	152	20	128.0	E1 55R-01 0301	J	-
JSK 36 DV 57 C6 AA	225	152	20	130.0	E1 55R-01 0301	J	ST*

* Sensor couplings in the standard version are complete sets, which means that remote display (SKE 501620200) and cable set (SKE 002110300) are included in the delivery.

Also available on JSK SL slider assembly with an overall height from chassis mounting 173mm, 203mm, 220mm and 263mm.

- E-coated
- DIN mounting pedestal
- 3 years or 500,000 km warranty

Member of **JOST**-World

JOST, Germany Tel. +49 6102 295-0, jost-sales@jost-world.com, www.jost-world.com