

JOST

Montage- und Betriebsanleitung

LubeTronic

- ⓐ Installation and operating instructions for LubeTronic
- ⓑ Instructions de montage et d'utilisation pour LubeTronic
- ⓒ Istruzioni per il montaggio e l'uso del LubeTronic
- ⓓ Instrucciones de montaje y funcionamiento para el LubeTronic

Aktivierungsdatum:
Activation date :
La date d'activation:
Data di attivazione:
Fecha de activación:

In the development of the JOST LubeTronic, a great deal of importance was attached to ensuring that the components used for it met the high standards that are expected from JOST in terms of their mechanical properties and reliability.

To install the JOST LubeTronic, the existing lock jaw must be replaced.

To replace the lock jaw, the applicable installation and operating instructions together with the repair instructions for the relevant fifth wheel coupling must be consulted.

All the mechanical functions and the control of the individual fifth wheel coupling components are retained. Further information about this can be found on our website: www.jost-world.com.

1 Safety information	16
1.1 Safety information for installation	16
2 Correct use	16
3 General information	17
4 Assembly and commissioning	17
4.1 Installing the lubricant dispenser	17
4.2 Painting	19
4.3 Replacing the lock jaw (JSK 37 W)	20
4.4 Replacing the lock jaw (JSK 40 & JSK 42)	21
4.5 Connecting the lubricant dispenser and putting it into operation	22
5 Table of faults	23

1 Safety information

The relevant safety regulations in your country (for example Health & Safety at Work) apply for working with fifth wheel couplings, tractor units, semi-trailers and the JOST LubeTronic.

The appropriate safety information in the owner's handbook for the tractor unit and the semi-trailer are valid and must be followed.

The safety information set out below must be observed when assembling the JOST LubeTronic. Safety information directly linked to the activity is listed again individually.



Safety information in the following sections is shown with the warning triangle symbol. You must comply with this safety information!

1.1 Safety information for installation

- ▶ The JOST LubeTronic must be attached to the fifth wheel coupling as shown in section 4.
- ▶ The JOST LubeTronic must be installed by trained personnel in suitable workshops. Follow the installation directive supplied by the vehicle manufacturer, the requirements of Directive 94/20 EC, Appendix VII and/or ECE R55-01 Appendix 7 and, if applicable, Sections 19, 20 and 21 of the Road Traffic Act and the installation instructions.
- ▶ If the equipment is not installed correctly, all warranty claims against the manufacturer and the supplier of the JOST LubeTronic will be rendered void.
- ▶ For ADR/GGVs vehicles, the regulations and country-specific legislation must be observed.
The ADR report can be viewed at www.jost-world.com.

2 Correct use



When equipping a fifth wheel coupling with LubeTronic, take care to ensure that the fifth wheel coupling is placed on the vehicle using a suitable lifting tool. Lifting a fifth wheel coupling with LubeTronic with a forklift truck, for instance, could cause damage to the LubeTronic.

The JOST LubeTronic is an automatic lubricating system for lock jaws that comprises a fully-automatic lubricant dispenser and specially-coated lock jaw.

The JOST LubeTronic is designed for attachment to low-maintenance fifth wheel couplings of type JSK 37 W, JSK 40 W and JSK 42 W.

The JOST LubeTronic also permits the lubrication of articulated connections and bearings on fifth wheel coupling components, such as on lifting equipment for fifth wheel couplings.

The system must not be installed in tractors that are operated on building sites.

The permissible operating temperatures of the lubricant dispenser lie between -20°C and +70°C.

At operating temperatures below -20°C, the lubricant dispenser will not dispense any lubricant. The specially-coated lock jaw allows the system to continue operating without problems even without lubricant. As soon as the temperature returns to the operating temperature range specified, the lubricant dispenser will resume working as normal.

The system is not suitable for continuous use at temperatures below -20°C.

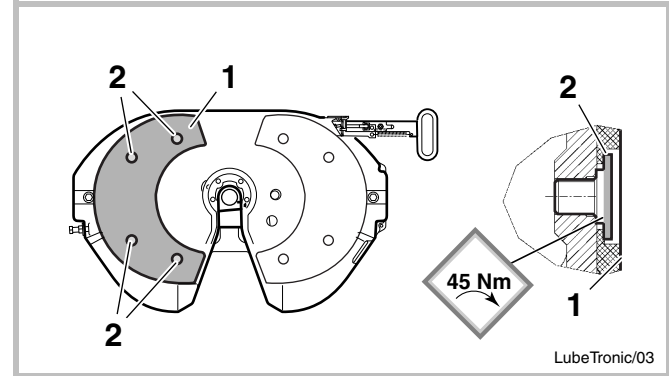
The LubeTronic's service life is around 3 years.

During the LubeTronic's operational life, the LED will flash once every 2 minutes on the lubricant dispenser. When the lubricant dispenser is empty, the LED on the lubricant dispenser will flash once every 5 seconds.

Spent lubricant dispensers should be disposed of as electronic scrap. Such materials must be disposed of in accordance with legal requirements. For more information, contact your local waste collection facility or JOST.

Once the operating life has expired, the lock jaw and lubricant dispenser must be replaced.
Spare parts kit: SKE004070100

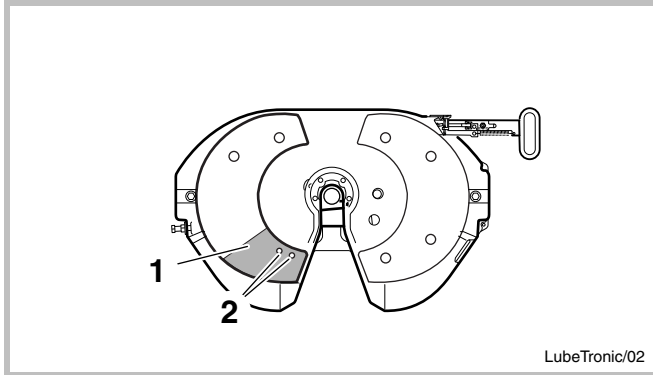
4.1 Installing the lubricant dispenser



Note

Comply with the tightening torque!

- ▶ Remove the screws (2) on the left-hand liner (1). Remove the top plate liner (1) from the fifth wheel coupling.



Note

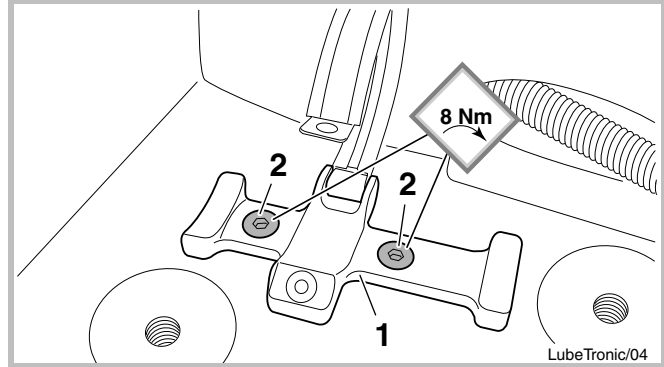
Only use the template (1) appropriate for the JSK type.

- ▶ Insert template (1) as shown in the holder for the left-hand liner.

Note

Ensure that the distance between the two drill-holes is the same as on the mounting clip.

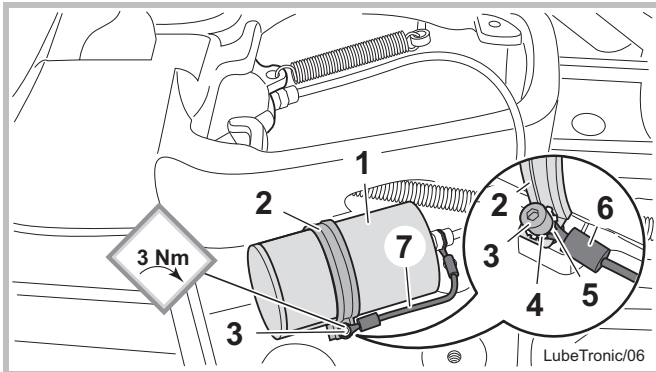
- ▶ Transfer the drilling points (2) of the template (1) onto the fifth wheel coupling and drill through with a spiral drill bit \varnothing 5 mm.
- ▶ Tap an M6 thread.
- ▶ Re-install the left-hand liner.



Note

Comply with the tightening torque!

- ▶ Screw the fastening clip (1) to the fifth wheel coupling using the countersunk head screws (2). If you wish, you may also secure the screws further by using Loctite, for instance.



On ADR vehicles, the earth strap (6) must be attached between the lubricant dispenser (1) and the upper section of the fifth wheel coupling plates. The earth strap must also be attached between the coupling plate and the base of the fifth wheel coupling.

The ADR report can be viewed at www.jost-world.com.

Note

Ensure that the groove of the fastening clip (2) lies in the recess on the lubricant dispenser (1).

- ▶ Insert the lubricant dispenser (1) into the fastening clip (2) and close the fastening clip (2).

Note

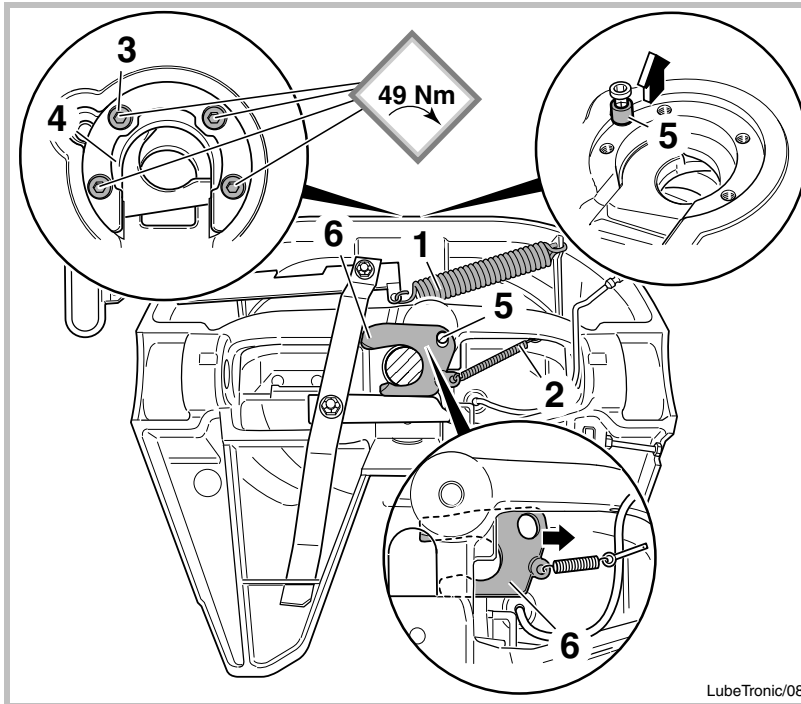
Comply with the tightening torque!

- ▶ Secure the fastening clip (2) using Allen screw M5 x 10 mm (3), toothed ring (4) and washer (5).

4.2 Painting

If the fifth wheel coupling with LubeTronic is painted and a paint dryer is used, or the paint is dried in a drying chamber, care must be taken to ensure that the LubeTronic is not subjected to direct exposure to the rays. Persistent heating of the LubeTronic to over 70°C must be avoided.

4.3 Replacing the lock jaw (JSK 37 W)

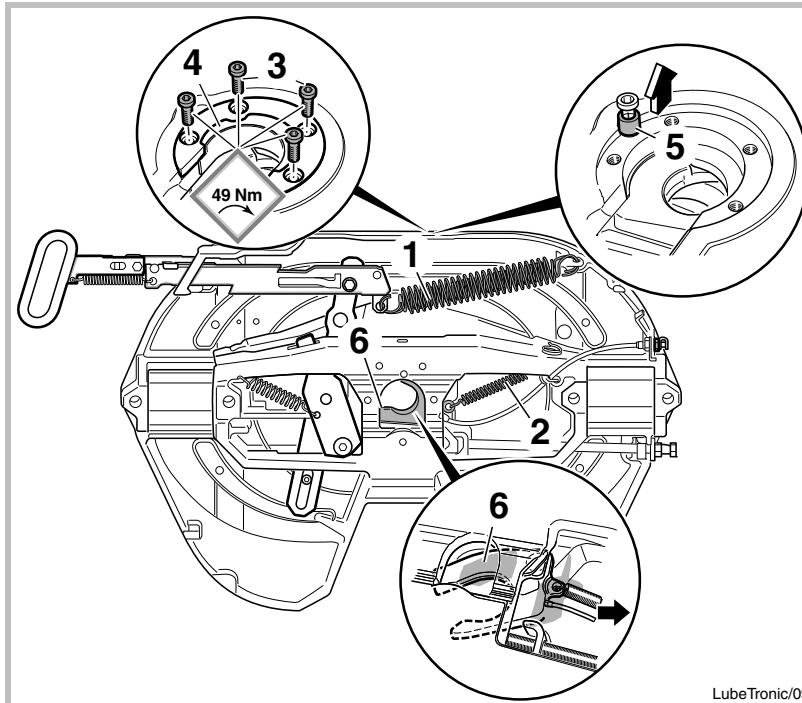


- ▶ Unhook the double spring (1).
- ▶ Release the spring (2).
- ▶ Undo the screws (3) on the wear part.
- ▶ Remove the wear part (4).
- ▶ Remove the pin (5).
- ▶ Remove the lock jaw (6).
- ▶ Install specially-coated lock jaws in the reverse sequence using assembly parts, some of which are new
- ▶ To adjust the fifth wheel coupling, test king pin SKE 008630000 can be used. This must however lie over its entire surface on top of the fifth wheel coupling!

Note

The detailed steps for removing the lock jaw can be found in the repair instructions for JSK 37 (available on the Internet at www.jost-world.com).

4.4 Replacing the lock jaw (JSK 40 & JSK 42)

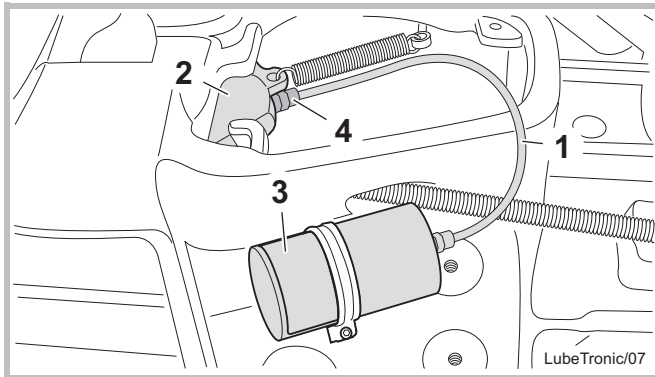


- ▶ Unhook the double spring (1).
- ▶ Release the spring (2).
- ▶ Undo the screws (3) on the wear part.
- ▶ Remove the wear part (4).
- ▶ Remove the pin (5).
- ▶ Rotate and remove the lock jaw (6).
- ▶ Install specially-coated lock jaws in the reverse sequence using assembly parts, some of which are new
- ▶ To adjust the fifth wheel coupling, test king pin SKE 008630000 can be used. This must however lie over its entire surface on top of the fifth wheel coupling!

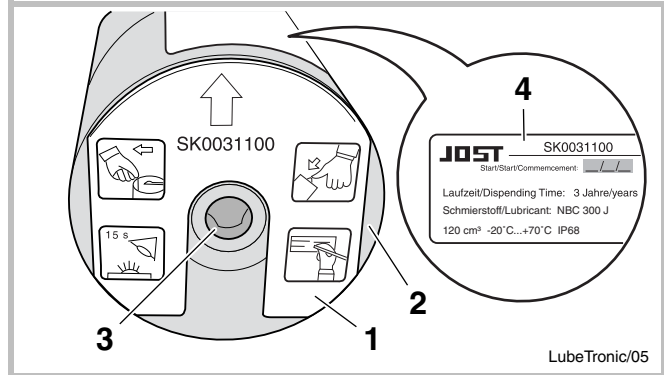
Note

The detailed steps for removing the lock jaw can be found in repair instructions for JSK 40 & JSK 42 (available on the Internet at www.jost-world.com).

4.5 Connecting the lubricant dispenser and putting it into operation



- ▶ Remove the protective cap on the hose (1) of the lubricant dispenser (3). Connect the hose (1) on the lubricant dispenser (3) correctly to the connecting piece on the lock jaw (2). To do this, slide the locking nut onto the hose (1). Place the end of the hose on the grommet of the connecting piece.
- ▶ Tighten the locking nut (4) to its terminal position.



- ▶ Pull the protective cap (1) upwards from the lubricant dispenser (2).
- ▶ Firmly press the push-button (3) of the lubricant dispenser (2) inwards.
- ▶ Write the start date on the sticker (4).
- ▶ Write the start date on the enclosed second label and stick it on in a clearly-visible place.

Note

As confirmation that the lubricant dispenser (2) has been activated, the LED in the push-button (3) lights up for at least 15 seconds.

The lubricant dispenser can only be activated once.

An activated lubricant dispenser cannot be deactivated.

The specially coated lock jaw is supplied with an initial lubrication. The initial lubrication guarantees lubrication of the lock jaw until the lubricant cartridge has supplied a sufficient quantity of grease. This significantly improves the operating life. If the lubricant is wiped off the lock jaw, e.g. as a consequence of cleaning, we recommend greasing the functional surfaces of the lock jaw again by hand before continuing to operate the vehicle.

No.	Fault	Cause	Remedy
1	The lubricant dispenser is not lubricating or is not lubricating adequately.	The lubricant dispenser is not activated.	Activate the lubricant dispenser. See Section 4.5 "Connecting the lubricant dispenser and putting it into operation" in these A&O.
		The lubricant line is damaged or crushed.	Check the lubricant line for damage and crushing and replace any lines that are damaged or crushed.
		The grease supply has run out.	The lubricant dispenser and lock jaw must be replaced. Spare parts kit: SKE004070100
		The housing is damaged.	The lubricant dispenser and lock jaw must be replaced. Spare parts kit: SKE004070100
2	Function light flashes once every 5 seconds	The grease supply has run out.	The lubricant dispenser and lock jaw must be replaced. Spare parts kit: SKE004070100



Siemensstraße 2, D-63263 Neu-Isenburg, Telefon +49 6102 295-0, Fax +49 6102 295-298, www.jost-world.com

1006181 • ZDE 199 002 128 • 10/2015