

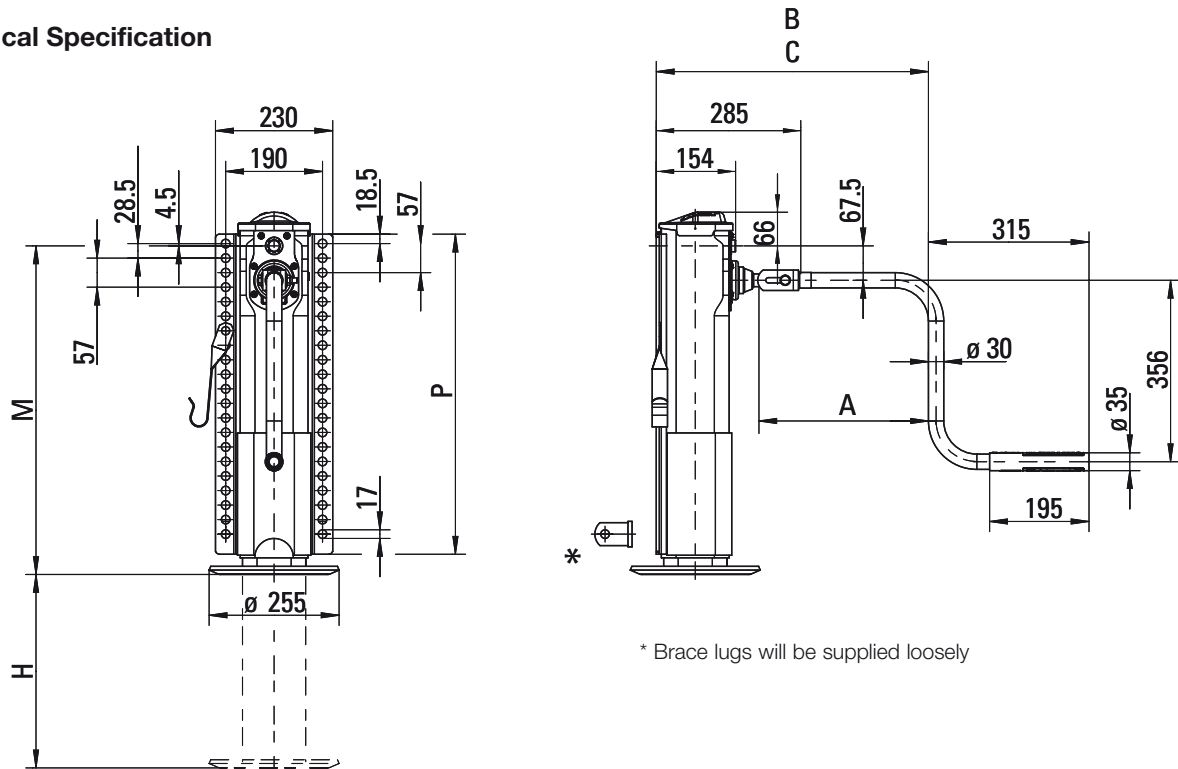


## Stabilising leg

- Stabilising leg for liquid and bulk tippers (rear)
- Support while unloading
- Levelling due to two separate landing gears
- Low maintenance because of integrated lubricant cartridge
- High degree of installation variability thanks to double bolt hole pattern
- Additional spindle nut
  - Additional protection against wear and tear
  - Minimal risk of accidents
- Protected against wear by fully sealed gearbox and reinforced inner tube
- Continuous back plate for high variability during installation
- Reinforcement for maximum bending strength
- Heavy duty shaft for better shock resistance
- Secure stand due to reinforced rigid foot

# Modul CS

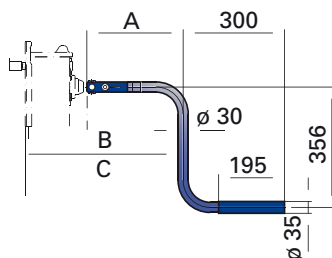
## Technical Specification



Order No.	Foot	Back plate	M (mm)	H (mm)	P (mm)
CS1044700R	T rigid	full length	750	470	728
CS1054700R	T rigid	full length	700	380	678
CS1064700R	T rigid	full length	650	380	628
CS1084700R	T rigid	full length	600	330	578
CS1094700R	T rigid	full length	550	280	528

## Crank handles

Various crank handle lengths for individual adjustment to the vehicle width.



Order No.	A	B (Low gear)	C (High gear)
JS U01	350	534	553
JS U02	415	599	618
JS U03	450	634	653
JS U04	480	664	683
JS U05	520	704	723
JS U07	570	754	773
JS U08	620	804	823

## Technical Data (per set)

Characteristic	Value
Lifting capacity	12/24 t
Static load	33/66 t
Lift per turn of handle	
- Low gear	0,9 mm
- High gear	15,0 mm
Crank force at 8 t lifting capacity	110 N

Crank handle has to be ordered separately and will be delivered loosely. Two stabilising legs are required per trailer. There is no cross shaft. There is no need for a connection shaft.

Member of **JUST**-World

JUST, Germany Tel. +49 6102 295-0, jost-sales@jost-world.com, www.jost-world.com