

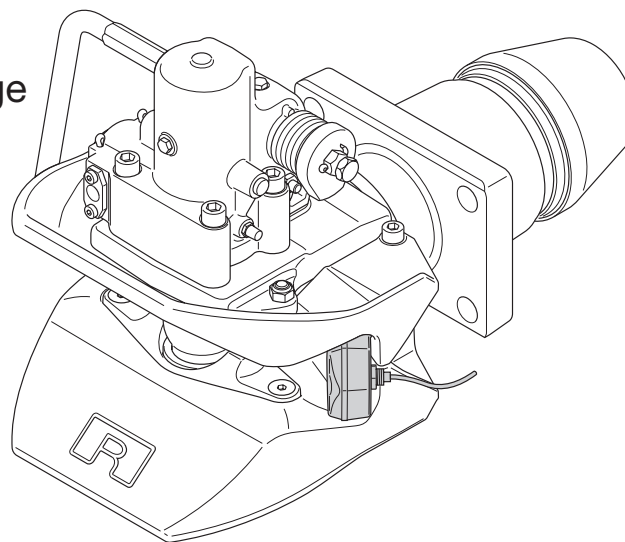
RO★57



Reparaturanleitung | Repair instructions | Руководство по монтажу

ROE46152 ,ROE70983

- Ⓓ Schwenkwinkel- Warnanzeige
- ⒼⒷ Turn angle warning indicator
- ⒼⓇⓈ Показатель угла поворота



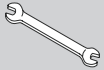
Turn angle warning indicator

Requirements

- System is depressurised (only applies for towing hitch with pneumatic remote control)
- Towing hitch closed
- Electric connections powered off

TOOLS:

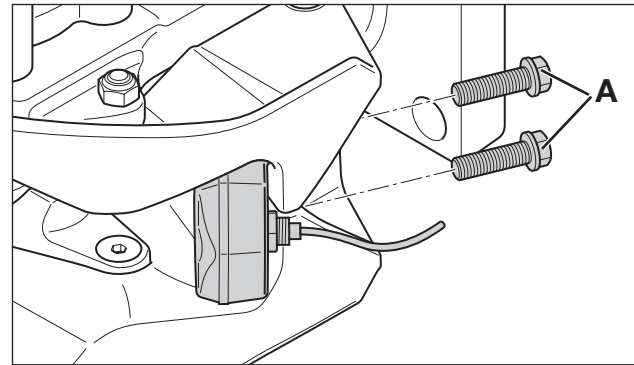
- Socket spanner SW15
- Open-end spanner SW17



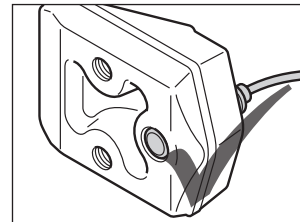
Removal

Sensor

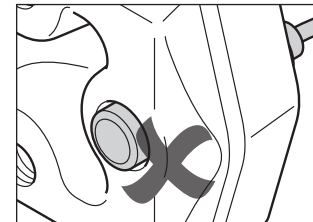
- Disconnect the sensor cable at the interface to the truck
- Release the lock nut [3A]
- Unscrew the sensor



[1] A Bolts



[2] A Sensor position ok



[2] B Sensor position wrong

Wedge

- Before removing the wedge, remove the sensor
- Clean the bolt heads [3D] and remove the bolts
- Take out the wedge [3C]

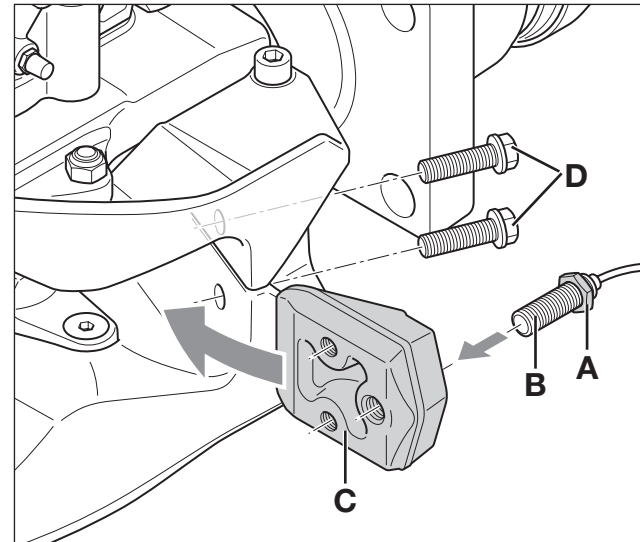
Installation

The sensor and wedge is installed in the reverse order. Take care to observe the following points:

- Clean all bolt and contact surfaces thoroughly before installation

Wedge

- Make sure that the wedge is fitted in the correct position
- Tighten the bolts [3D] with the correct tightening torque in such a way that the wedge is lying flat on both halves of the funnel



- [3] A Lock nut
 B Sensor
 C Wedge
 D Two bolts

Sensor

- Only screw in the sensor until it is approximately 1.5 mm short of the boring [2A]
- Connect the sensor cable at the truck's electrical interface
- Set the sensor

**TIGHTENING TORQUES:**

- Bolts [3D] to
halves of the funnel: 85+10 Nm

Setting

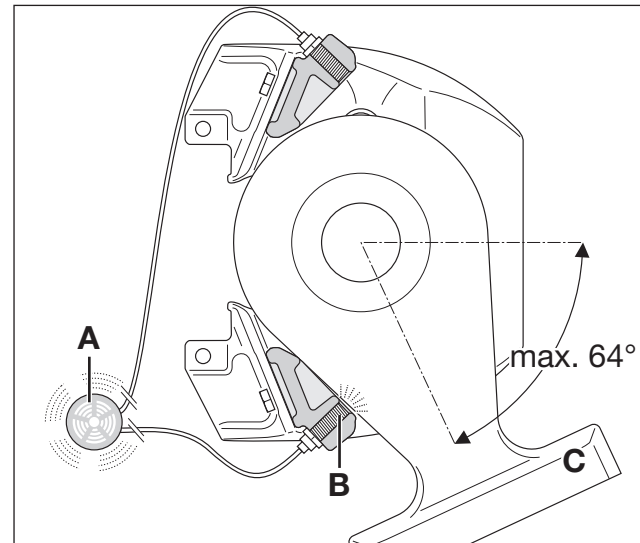
- Hitch up a test towing eye or original trailer
- Swivel the unit until the towing eye is approximately 1.5 mm from the stop wedge
- The signal indicator (warning lamp and warning sound) must now be activated
- If not, turn the sensor gently inwards until the signal appears

ATTENTION!

The sensor must never be turned so far that it is projecting out of the boring [2].

- When it is positioned correctly, lock the sensor in position with the nut [3A]
- Carry out the same procedure on the other side if parts were also replaced there

The max. turn angle of 64° can only be guaranteed by using ROCKINGER towing eye ROE57370!



- [4] **A** Signal indicator in the driver's cab
B Sensor with signal
C Towing eye ROE57370



Technische Änderungen vorbehalten.
Aktuelle Informationen finden Sie unter:
www.jost-world.com

Technical modifications reserved.
For up-to-date information, please visit:
www.jost-world.com

Мы сохраняем за собой право вносить
технические изменения. Актуальную
информацию смотрите по адресу:
www.jost-world.com

JOST-Werke
Siemensstr. 2
D-63263 Neu-Isenburg
Telefon +49(0)61 02295- 0
Fax +49(0)61 02295-298
www.jost-world.com