

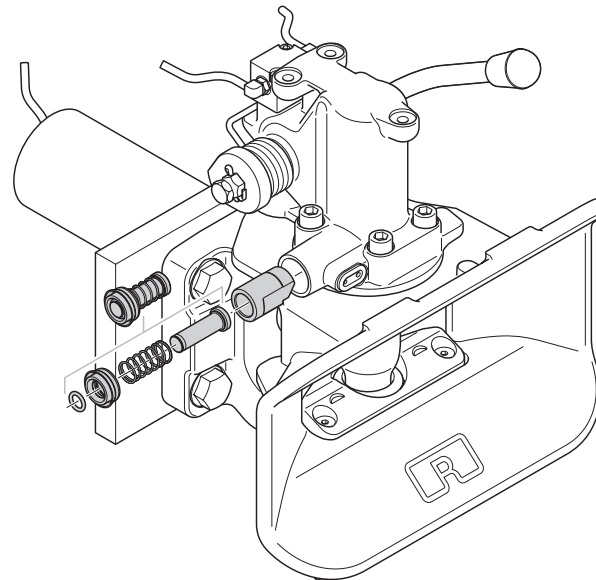
RO * 50 BNA
RO * 40 CH/40 E

RO * 400 T1
RO * 430 T2



Repair instructions

Ⓒ Locking device



GB General	3
1. Automatic unit	5
2. Function test	9

Liability

ROCKINGER assumes no guarantee for the completeness and correctness of the information. The contents of the instructions cannot be used to substantiate any claims. In particular, no liability is assumed for damages which are the result of incorrect repair or maintenance work.

Copyright

All the rights to these instructions and their annexes remain with ROCKINGER.

Emphasis in the text

Explanation of symbols

For ease of readability and to provide a clear overview, different types of information are marked in different ways.

Sentences introduced with an arrow contain instructions to perform certain actions:

- Carry out instructions one after the other in the sequence described.

The following information is introduced by a dash:

- Lists
- Preconditions for actions to be executed subsequently
- Descriptions of previous work steps
- Descriptions of statuses

Warnings of hazards and risks

Important passages which must be observed, are especially emphasised:



DANGER!

Warns against immediate dangers which could lead to serious injury or death.

- Provides instructions for defence against or avoidance of dangers.

**WARNING!**

Warns against risks which could lead to serious injury or death.

- Demands safety measures to protect the persons concerned.

Illustrations

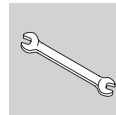
As necessary, texts are illustrated by pictures. The reference to a figure is made with a number in [square brackets]. Capital letters after a figure number, e.g. [12A] refer to the corresponding position in the picture.

Binding information**LUBRICANTS:**

- Lubricant for the previously described activity

**Supplementary information**

The information symbol refers to instructions and recommendations as well as additional information.

**TOOLS:**

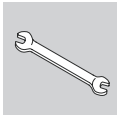
- List of the tools necessary for the subsequently described activities.

1. Automatic unit

Locking device

Requirements

- Towing hitch closed

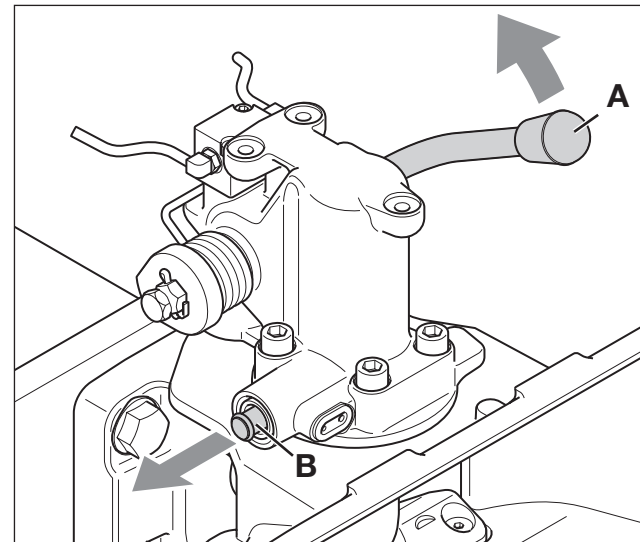


TOOLS:

- Pliers
- Screwdriver
- Rubber mallet
- Assembly plug, Part no. ROE84001

Dismantling

- Press the hand lever [1A] slightly upwards and hold it there so that the indicator pin [1B] is protruding slightly.
- Grip the indicator pin with the pliers and lever it out with the locking cap [2A]

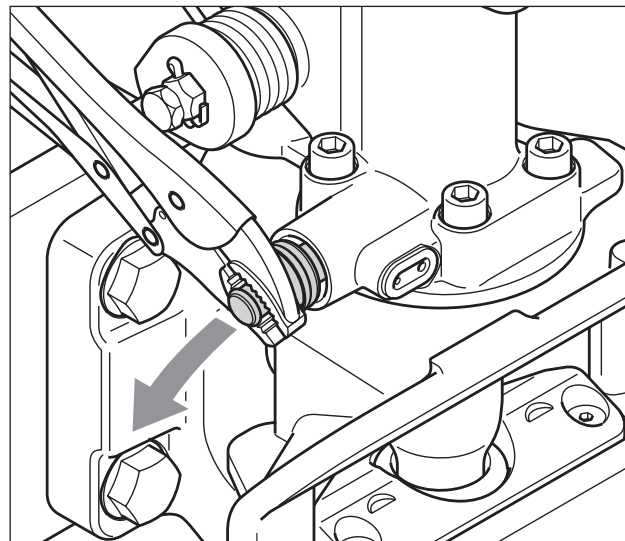


- [1] A Hand lever
B Indicator pin

**NOTE**

Both the indicator pin and the locking cap [3A] are now necessarily destroyed.
Repair instructions RO * 50 BNA,
www.jost-world.com; Spare parts

- Use the screwdriver to take out the indicator pin [3B]



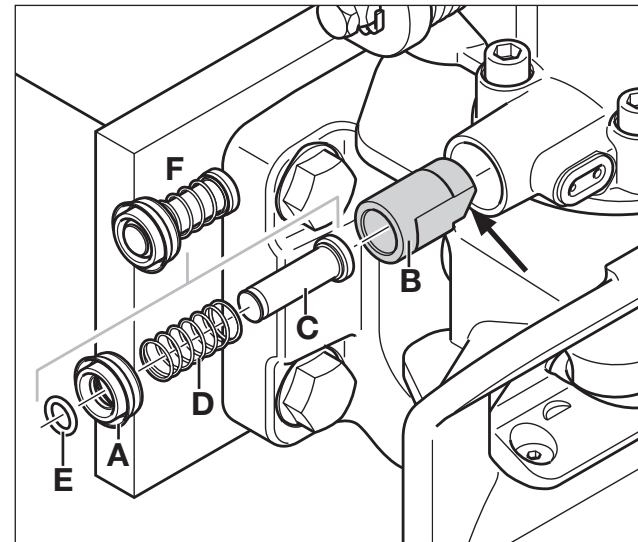
[2] A Lever out the lock with the pliers

1. Automatic unit

Locking device

Assembly

- Thoroughly clean and grease the exposed parts of the housing boring
- A complete new locking device set is required for assembly, Repair instructions RO *50 BNA, www.jost-world.com
- Insert the indicator pin [3C] through the spring [3D] and the locking cap [7A] and secure it in place with the O-ring [3E]
- Grease the locking pin [3B] and slide it into the boring with the bevelled surface downwards (arrow)
- Grease the assembled locking device [3F] in the area of the spring, and slide it into the boring to the stop, making sure that it is correctly centred
- Apply the assembly plug [4A] and hammer the lock [4B] in until it is flush with the edge of the housing [5]



- [3] A Locking cap
 B Locking pin
 C Indicator pin
 D Spring
 E O-ring
 F Assembled parts



NOTE

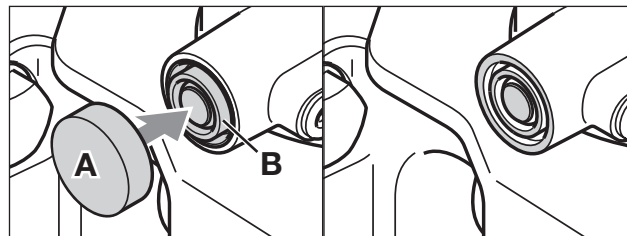
The locking cap must audibly engage

- Check the function of the towing hitch;
Section 2



LUBRICANT:

- Special grease ROE96040
- Only use the supplied special grease (risk of resin formation and loss of the lock)



[4] **A** Assembly plug,
Part no. ROE84001
B Locking device

[5] Lock flush with housing edge

2. Function test

Function test

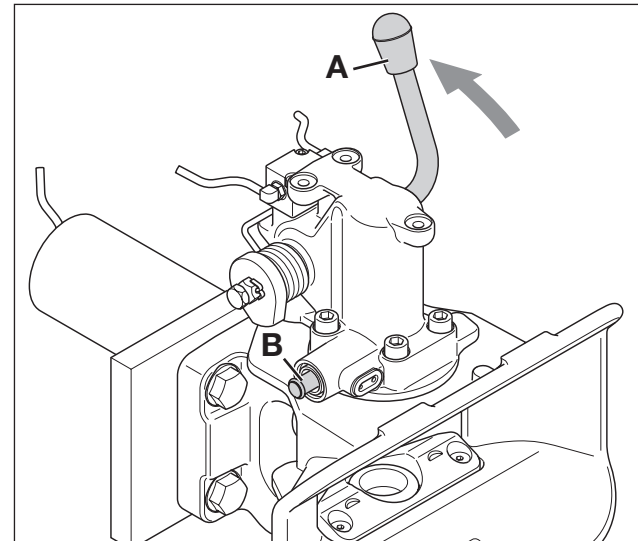
Procedure

- Press the hand lever [6A] upwards until it engages
- The towing hitch is open. The indicator pin [6B] must now be clearly protruding (ca. 17mm)

WARNING!

Risk of injury! The coupling pin and the hand lever are now under spring tension!

- Do not put your hand anywhere near the coupling pin or the hand lever!
- Use a suitable tool to lift the coupling pin in order to trigger the closing mechanism
- The towing hitch is closed. The indicator pin [7A] must not be protruding



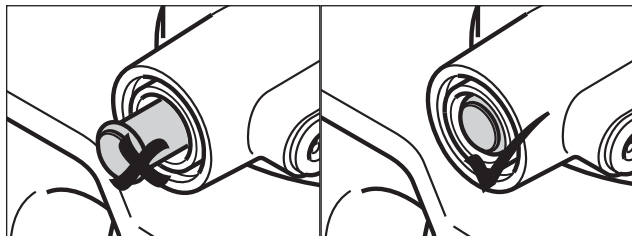
[6] A Hand lever
B Indicator pin



WARNING!

If the indicator pin is still protruding when the towing hitch is closed [7A] it is not permitted to drive with a trailer as there is a risk of accident.

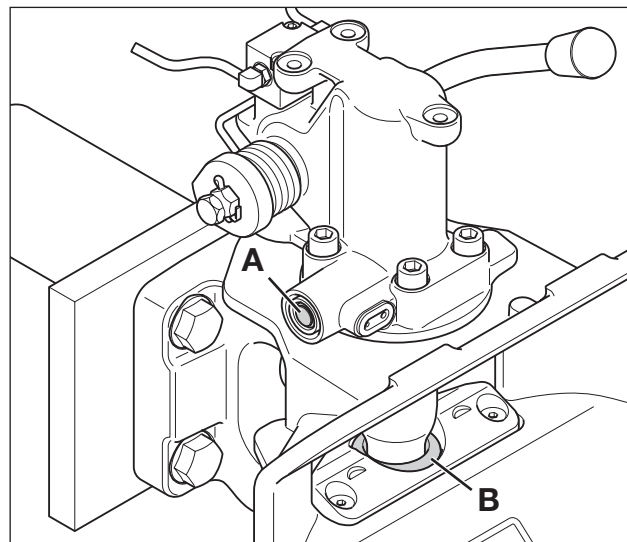
- Clean the lower bush [8B]
- Replace the lock; Repair instructions RO *50 BNA, www.jost-world.com



[7] **A** Wrong

[7] **B** O.K.

Indicator pin with the towing hitch closed



[8] **A** Indicator pin

B Lower bush



Technische Änderungen vorbehalten.
Aktuelle Informationen finden Sie unter:
www.jost-world.com

Technical modifications reserved.
For up-to-date information, please visit:
www.jost-world.com

Sous réserve de modifications techniques.
Vous trouverez des informations mises à
jour sur le site : www.jost-world.com

Techniczne zmiany zastrzeżone.
Aktualne informacje można uzyskać na:
www.jost-world.com

JOST-Werke
Siemensstr. 2
D-63263 Neu-Isenburg
Telefon +49(0)61 02295- 0
Fax +49(0)61 02295-298
www.jost-world.com