



Montage- und Betriebsanleitung

D

Installation and operating instructions

GB

Instructions de montage et d'utilisation

F

ROCKINGER

Member of JOST-World

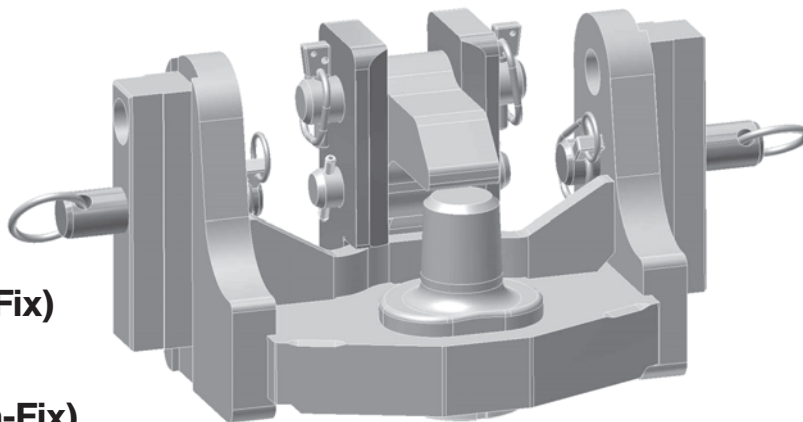
**Für Modellreihen
for Series
pour les séries**

RO*820 A 30

Nicht selbsttätige Kupplung (Piton-Fix)

Non-automatic coupling (Piton-Fix)

Attelage verrouillage manuel (Piton-Fix)



Series RO★820A 30

Non-automatic coupling with Piton-Fix

Typ 820 A 30, version B/K

For tractor machines using drawbar eyes DIN 9878 (50 mm) in order to ensure the prescribed swivel angle in the coupled state.

EC Directive 89/173

EC: e1 0399 – ABG: M9896



The installation and operating instructions must be carried in the vehicle.



The coupling must be installed by qualified personnel.

Read these instructions carefully before installation.

Official note:

When installing the piton, for the type inspection of the vehicles pursuant to § 20 StVZO (Regulations authorising the use of vehicles for road traffic), the individual inspection pursuant to § 21 StVZO or the assessment pursuant to § 19 StVZO, an inspection must be carried out by an officially approved expert or inspector for road traffic, a vehicle expert or by an official in accordance with Section 4 of the annex VIII b to the StVZO.

We reserve the right to make technical alterations.

1. Installation 12

2. Operation 13 – 14

2.1 Hitching 13

2.2 Unhitching 14

3. Maintenance 15

4. Technical data 16 – 17

Drawbar eyes 17

Forced steering retrofit kit 18



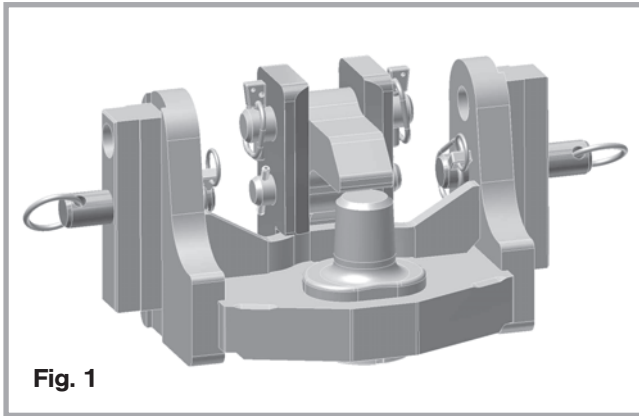


Fig. 1

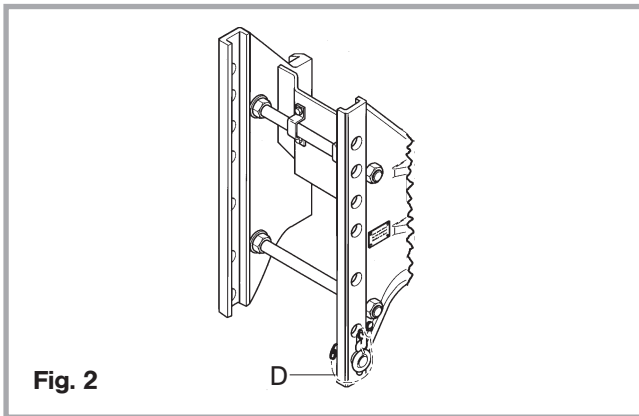


Fig. 2

1. Installation

The Piton-Fix is supplied in a ready-to-use condition.

- Observe the respective national regulations.
- Remove the anti-slip lock (D).
- Remove linchpin (G) and bolt (B).
- Insert the Piton-Fix in the guide rails of the coupling holder.

Attention: Keep a firm grip on the Piton-Fix! **Risk of accident!**

- Arrest the Piton-Fix at the desired height with the bolts (B) on the left and right.
- Secure the bolts (B) with linchpin (G) on the left and right.

Attention: The guide (F) of the Piton-Fix must not project beyond the guide rails of the coupling holder.

Observe the instructions of the tractor manufacturer for the permissible vertical load (generally 2 t).

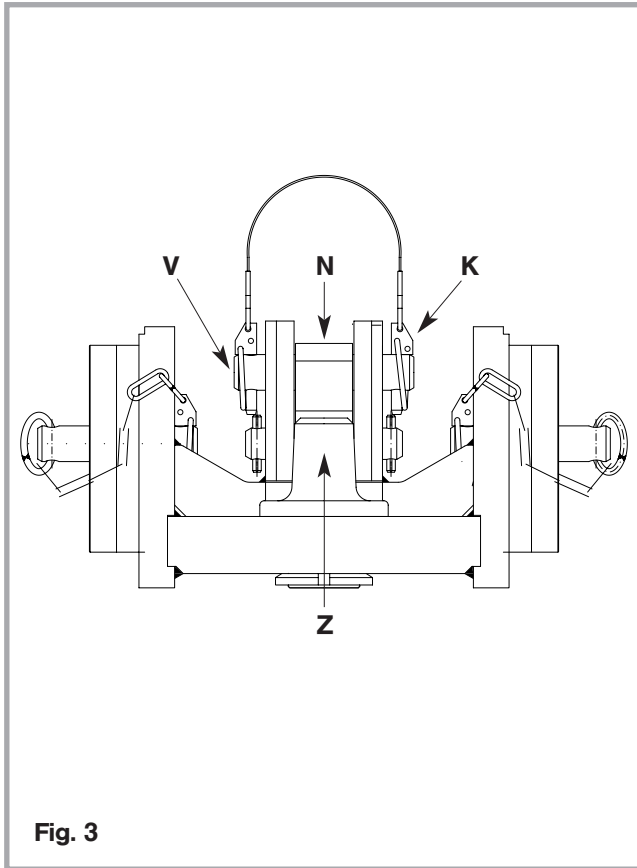


Fig. 3

2. Operation

For hitching and unhitching the legal stipulations must be observed.

2.1 Hitching

No personnel may be standing between the vehicles!

- Remove the linchpins (**K**) on the left and right (see Fig. 3).
- Slide out the locking bolt (**V**) (see Fig. 3).
- Swivel the latch (**N**) **upwards**.
- Set the drawbar eye at the height of the hitching point.
- Place the drawbar eye over the spigot (**Z**) and lower it using a suitable device.
- **Lower** the latch (**N**).
- Slide the locking bolt (**V**) into the holding eyes.
- Secure with the linchpins (**K**) on the left and right.

Check:

The **locking bolt** must be **secured** by the linchpin.

Caution, risk of accident!

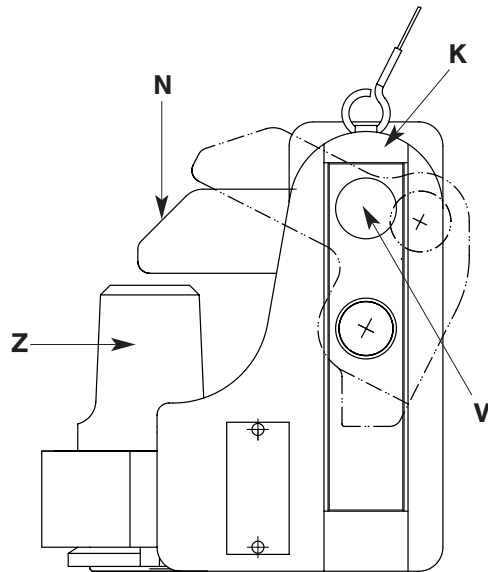


Fig. 4

2.2 Unhitching

- Secure the trailer against rolling away.
- Remove linchpin (**K**).
- Pull out the locking bolt (**V**).
- Swivel the latch (**N**) **upwards**.
- Lift the drawbar eye from the spigot (**Z**) using a suitable device.
- Move the tractor vehicle forwards.
- **Lower** the latch (**N**).
- Replace the locking bolt (**V**) and secure with the linchpin (**K**).

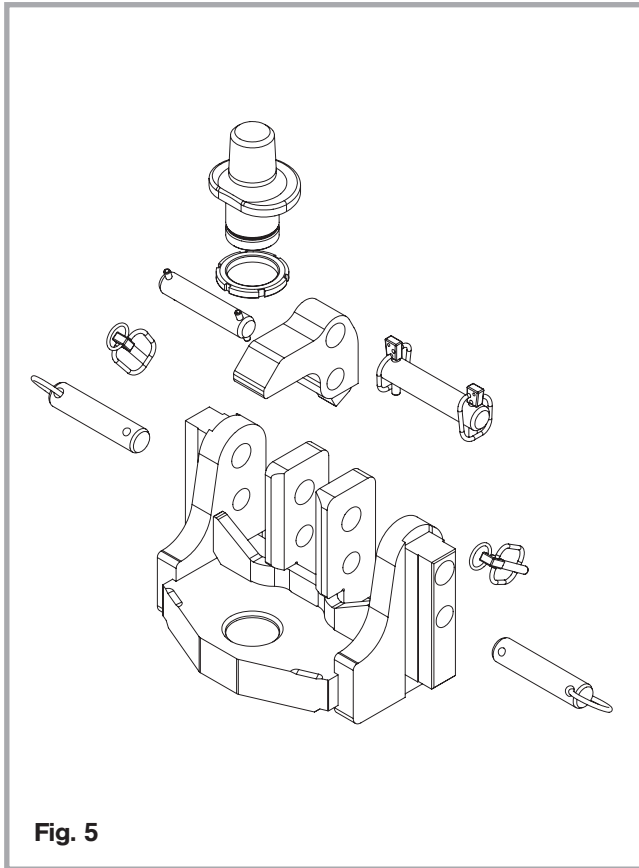


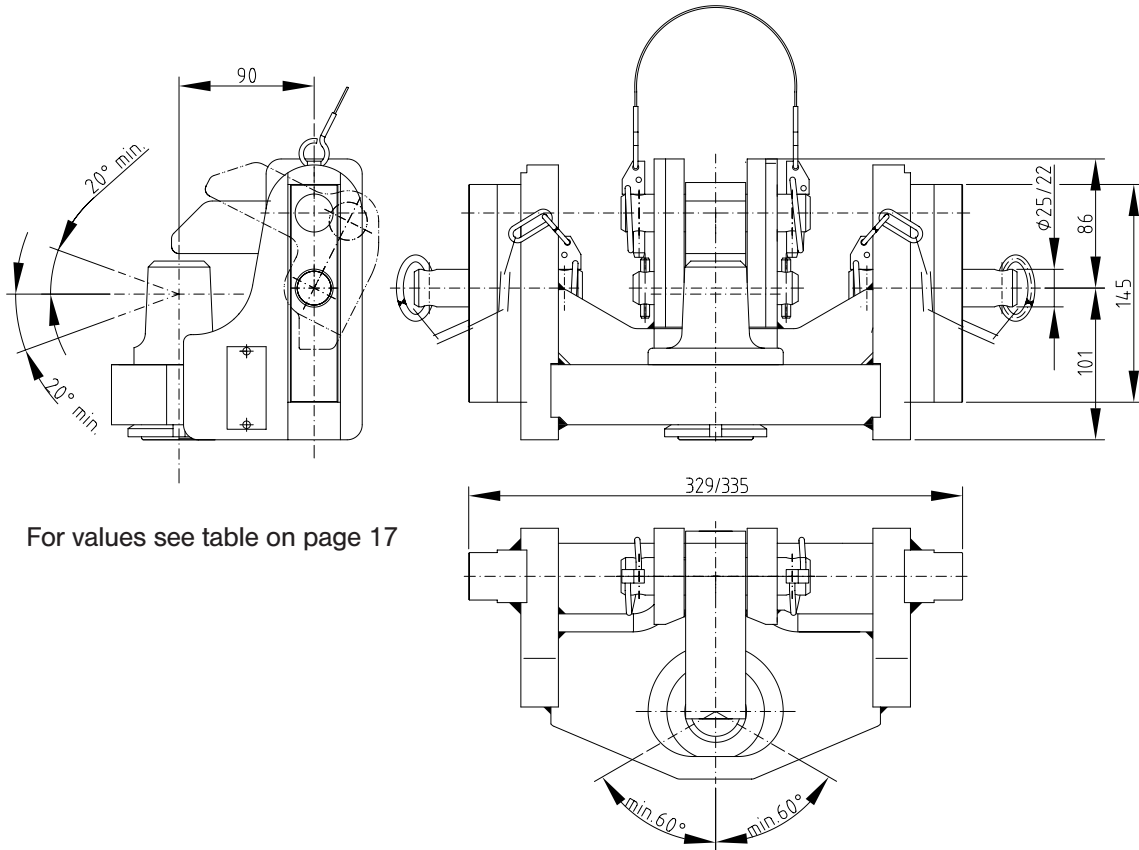
Fig. 5

3. Maintenance

To reduce the wear and tear on the Piton-Fix and the towing equipment, lubricate the contact surfaces with multipurpose grease at regular intervals depending on the deployment conditions and after cleaning with high-pressure washers.

- Permitted wear of the piton (Piton-Fix, nominal dimension $44,5 \pm 2$) to a minimum of 41 mm.

Repairs may only be carried out by a qualified workshop!



For values see table on page 17

Fig. 6

4. Technical Data

RO★820 A

- Piton-Fix with manual lock
- for use in coupling holders

- Piton \varnothing 44,5 mm
- Weight 22,8 kg

RO	Track width (Sw) (mm)	S (l)	D (kN)	ABG M	EC e1
820A30100	330	3	89,3	9896	0399
820A36100	336	3	89,3	9896	0399

Drawbar eyes

RO★820 A

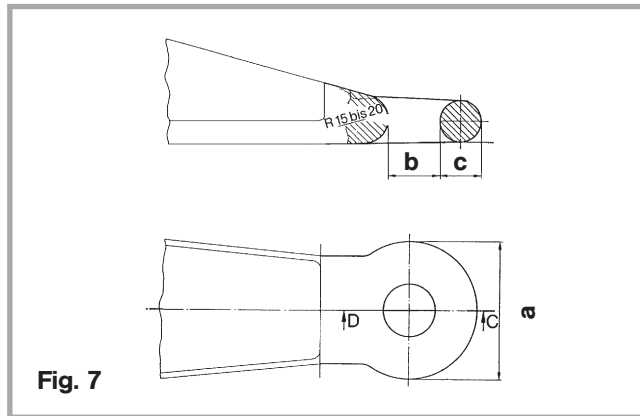


Fig. 7

Drawbar eyes

DIN/ISO	a (mm)	b (mm)	c (mm)	Swivel angle	
				horizontal	vertical
9678/5692-1	110-120	50	30	min. 60°	min. 20°

Installation on the right 70L052
Installation on the left 70L053
Installation on both sides 74L026

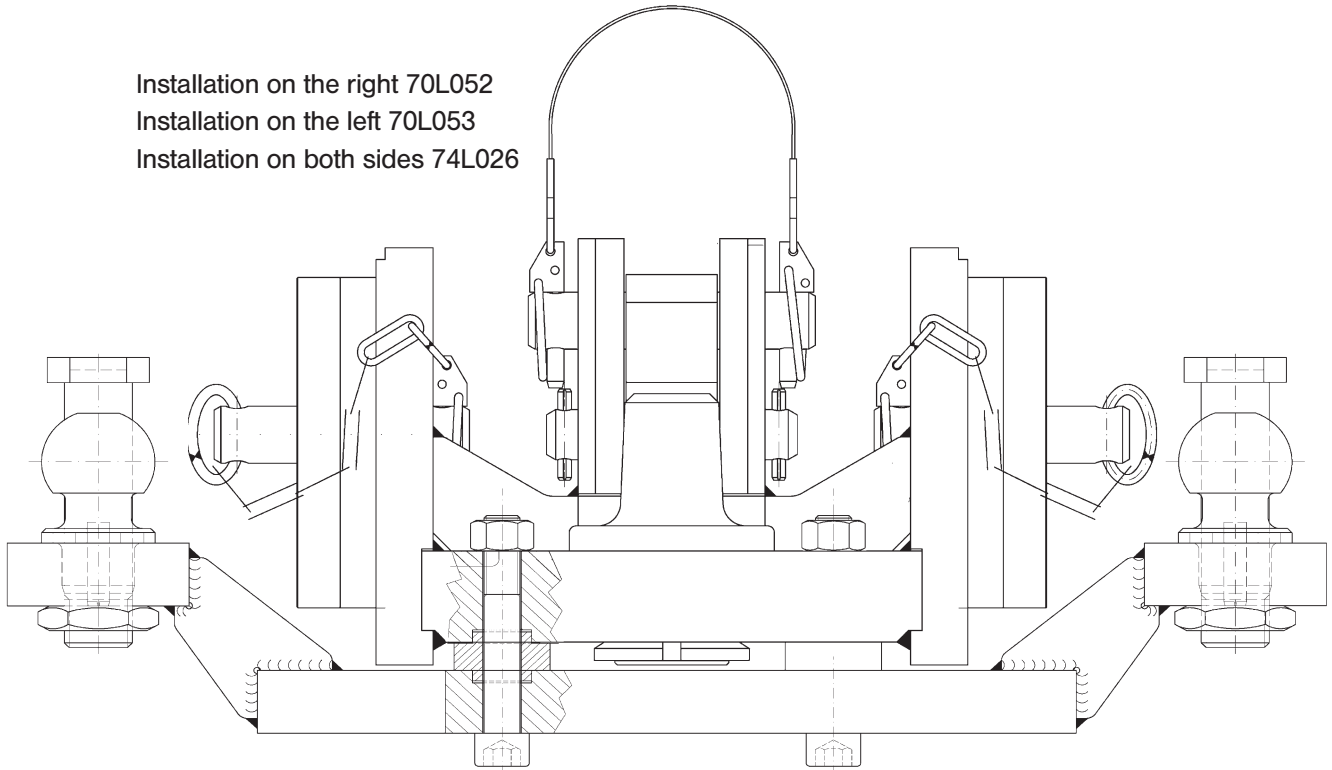


Fig. 8



JOST-Werke · Siemensstr. 2, D-63263 Neu-Isenburg · Telefon +49 (0) 61 02 295-0 · Fax +49 (0) 61 02 295-298 · www.jost-world.com

W0034-D/GB/F · 10/2008