



ROCKINGER

Montage- und Betriebsanleitung

D

Installation and operating instructions

GB

Instructions de montage et d'utilisation

F

Member of JOST-World

Für Modellreihen / for Series / pour les séries

RO*810B30

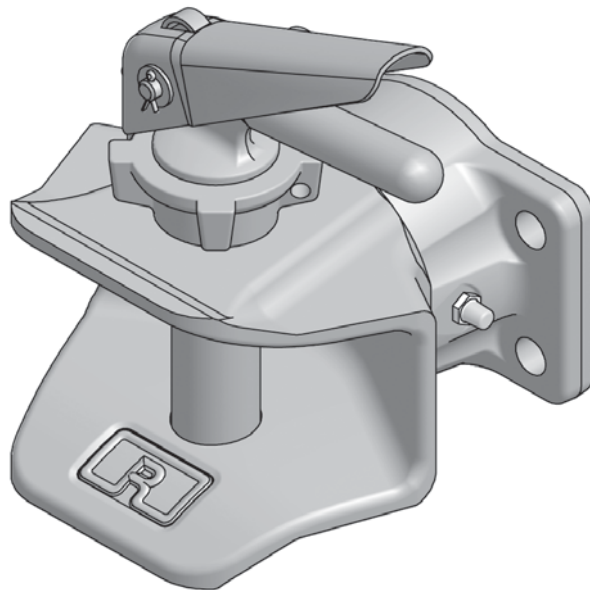
RO*810B40

RO*810B50

Manuelle Anhängerkupplung mit Flansch

Non-automatic trailer coupling with flange

Attelage verrouillage manuel avec palier à platine



Series RO★810 B

Non-automatic trailer coupling with flange

- Type 810
 - Version A with socket pin above
 - Version B with socket pin below
- Hand lever \varnothing 30,2 mm



The assembly and operating instructions must be kept in the vehicle!



The coupling may only be fitted by qualified personnel!

Read these instructions carefully before starting work!

Note:

When fitting the trailer coupling the Council Directive 89/173 EEC and the relevant national regulations must be observed. The coupling must be fitted in accordance with these assembly and operating instructions.

If the installation of the trailer coupling should alter the load values of the vehicle (e.g. permissible axle load, total weight, permissible vertical load) the vehicle documents must be altered accordingly.

We reserve the right to make technical alterations.

Safety instructions 12

1. Fitting 13

2. Operating 14

2.1 Hitching 14

2.2 Unhitching 14

3. Maintenance 15 – 16

3.1 Inspection 15 – 16

4. Technical data 17 – 18

Drawbar eyes 18

Single hand pins 18





The safety instructions are summarised in a single chapter. In any situation where the user of the trailer coupling is at risk, the safety instructions are repeated in the individual sections and marked with the warning symbol shown here.

When handling trailer couplings, tractor vehicles and trailers, the relevant safety regulations in the respective country must be observed. Any safety instructions in the operating manual of the tractor vehicle and the trailer remain valid and must be observed.

For operation, maintenance and assembly, the safety instructions listed below must be observed. Further safety instructions are then given in the individual case which relate directly to the respective activity.

Safety instructions for operation

- The trailer coupling may only be operated by authorised persons.
- The installation and operating instructions of the respective trailer coupling retain their validity and must be observed.
- Only use the trailer coupling and the towing eye of the trailer if they are in perfect technical condition.
- Only carry out hitching / unhitching operations on firm, level ground.
- During hitching, nobody may stand between the tractor vehicle and the trailer.
- After every hitching operation, the correct locked status of the trailer coupling must be checked by means of the control pin or the remote indicator. Only drive the rig in the correctly locked status
- **Never reach into the opened coupling.**

Safety instructions for maintenance

- For maintenance work, only use the specified lubricants.
- Maintenance work may only be carried out by qualified personnel.

Safety instructions for installation

- Installation may only be carried out by authorised workshops.
- Installation must be carried out in compliance with the relevant accident prevention regulations and the technical regulations for mechanical equipment.
- Only original ROCKINGER components may be used. .
- Instructions and installation guidelines of the vehicle manufacturer must be observed, e.g. type of fastening, clearances etc.
- All screwed connections must be tightened with the prescribed tightening torque.
- Work may only be carried out on the trailer coupling when it is closed.
Risk of injury!
- The trailer coupling must be installed in accordance with these installation and operation instructions and may only be carried out on agricultural or forestry tractor machines in accordance with Directive 74/150/EEC.
- Type plates and warnings must be clearly visible before the coupling or drawbar eye are used and must not be rendered illegible in any way. Paint residues or protective foils must be removed.



Trailer couplings are vehicle connection parts which require model approval and are subject to the highest safety requirements.

Alterations of any kind shall cause the warranty to lapse and invalidate the model approval, which in turn invalidates the vehicle operation permit.

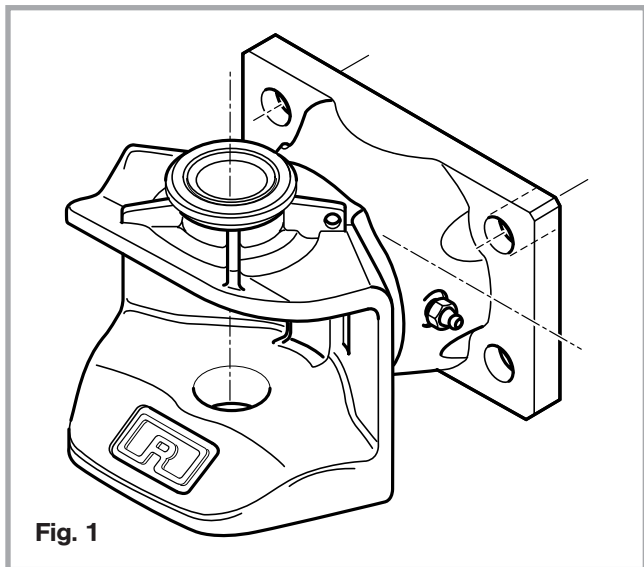


Fig. 1

1. Fitting

The coupling is supplied in a ready-to-use condition.

- On installation the relevant regulations must be observed.
- Regulations of the vehicle manufacturer
- Clearance for axial rotation of the coupling head
- Fit the fastening bearing on the cross bar
- Fastening with 4 hex bolts DIN 931

810B30: M14, quality 8,8 – tightening torque approx. 135 Nm

810B40: M16, quality 8,8 – tightening torque approx. 210 Nm

810B40: M20, quality 8,8 – tightening torque approx. 410 Nm and self-locking nuts quality 8

Note: The nut and bolt quality of the vehicle manufacturer may deviate from these values!

Attention: Only use ROCKINGER hand lever and Fendt plug in accordance with the general model approval (ABG)! Failure to observe this will invalidate the model approval.

Article no. 850/860/873...	Hole pattern	Bolt size	Tightening torque	ROCKINGER bolt set
...B30	120x 55	M 14	180 Nm	58095
...B40	140x 80	M 16	210 Nm	58096
...B50	160x100	M 20	410 Nm	58097

2. Operating

The legal stipulations must be observed for hitching and unhitching.

2.1 Hitching

- Place the towing eye at the centre of the funnel
- Open the coupling by removing the hand lever
- Release the brake on the front axle of the articulated drawbar trailer
- When connecting to a **rigid drawbar trailer** the towing eye must be placed as precisely as possible at the **the center of the funnel**.
Failure to observe this can lead to damage!
- Reverse the tractor vehicle slowly until the towing eye and body boring are aligned.
- Close the coupling by inserting the hand lever

Check:

The hand lever must be secured after coupling.

2.2 Unhitching

- Secure the trailer against rolling away or extend support feet
- Release and remove the hand lever
- Move the tractor vehicle forwards.

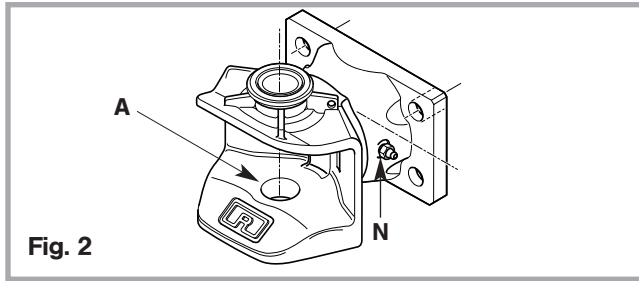


Fig. 2

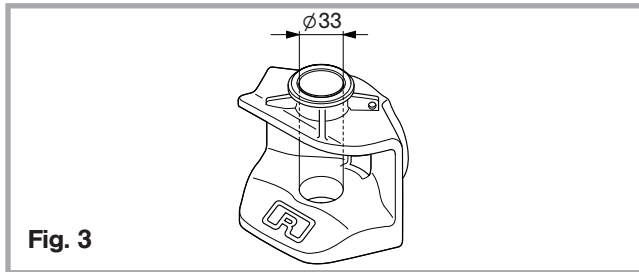


Fig. 3

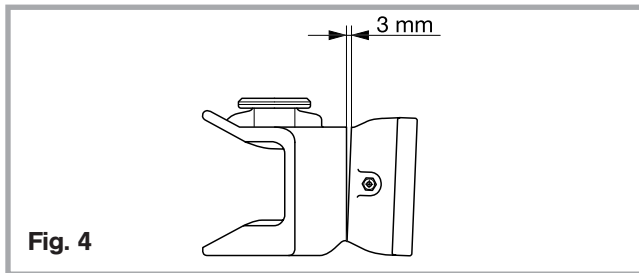


Fig. 4

3. Maintenance

To reduce wear on the coupling and towing eye, lubricate with multipurpose grease at regular intervals depending on the application conditions and after cleaning with pressure washers:

- At the lubricating nipple (N)
- Towing eye seat (A)

3.1 Inspection

- **Body boring**

top and bottom in driving position **max. 35 mm** oval

- **Bearing (articulated joint)**

- **Gap at the articulated joint**

between the funnel and flange collar with light pressure on the lower edge in the driving position: **max. 3 mm**

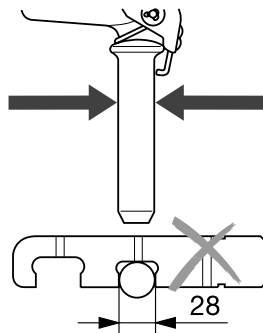


Fig. 5

● **Single hand pin**

– **Diameter**

Nominal dimension (mm)	Minimum wear limit (mm)
------------------------	-------------------------

30–31,5	28
---------	----

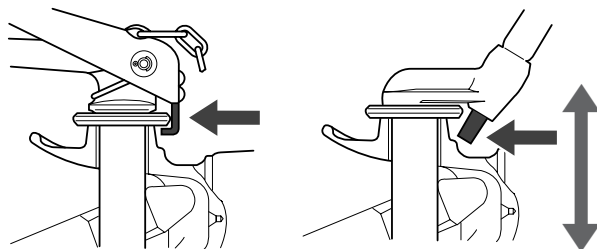
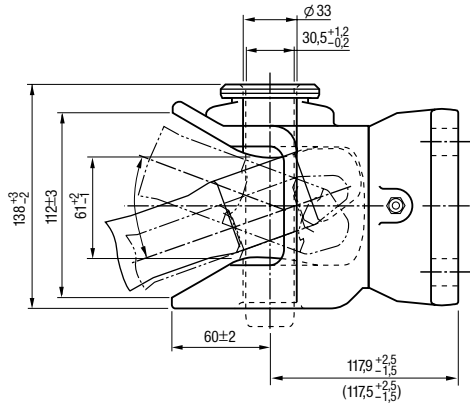
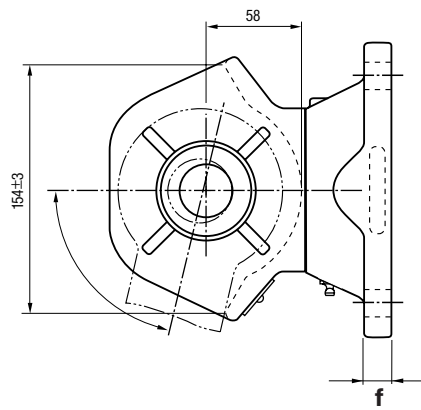
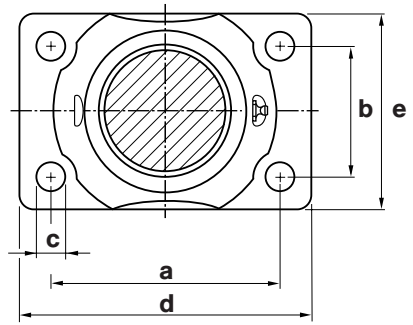


Fig. 5a

- **Locking:**
No deformation of the locking elements
- **Maximum height clearance:**
max. 6 mm



RO★810 B



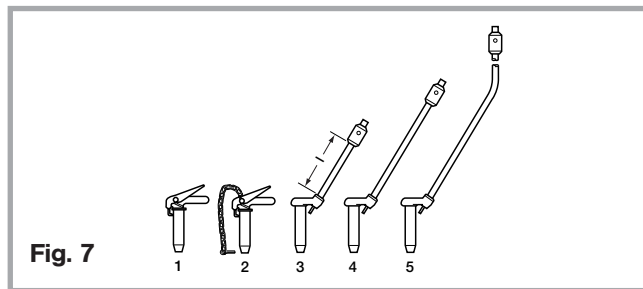
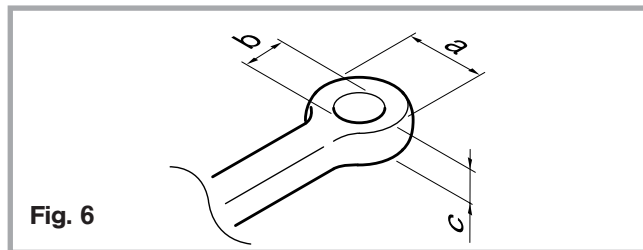
RO★	a (mm)	b (mm)	c (mm)	d (mm)	e (mm)	f (mm)
810B30	120	55	15	155	90	16
810B40	140	80	17	180	120	21
810B50	160	100	21	200	140	20



4. Technical data – Drawbar eyes / Single hand pins RO*810B

RO	Hole pattern	T (t)	S (t)	D (kN)	Single hand pin	ABG M	EC e1
810B30004	120x 55	6,0	1,5	50,0	–	9769	0296
810B30504	120x 55	6,0	1,5	50,0	66887	9769	0296
810B40004	140x 80	11,0	2,0	78,2	–	4916	0027
810B40504	140x 80	11,0	2,0	78,2	66887	4916	0027
810B50004	160x100	14,0	2,0	89,3	–	9770	0297
810B50504	160x100	14,0	2,0	89,3	66887	9770	0297

Observe data on type plate



Drawbar eyes

DIN	a (mm)	b (mm)	c (mm)	turn-angle	
				horizontal	vertikal
11026	100	40	42	min. 70°	min. 20°
11043	100	40	32	min. 70°	min. 22°
74053	115	50	45	min. 78°	min. 20°
74054	100	40	30,5	min. 76°	min. 20°
9678	120	50	30	min. 60°	min. 25°

Do not use any other towing eyes: **risk of accident!**

Single hand pins

Item	Length (l) (mm)	ROE
1	–	66887
2	–	66984
3	345	67075
4	500	67086
5	650	67549



JOST-Werke · Siemensstr. 2, D-63263 Neu-Isenburg · Telefon +49(0)61 02 295-0 · Fax +49(0)61 02 295-298 · www.jost-world.com

W 0021 D/GB/F · 02/2011