

RO★57



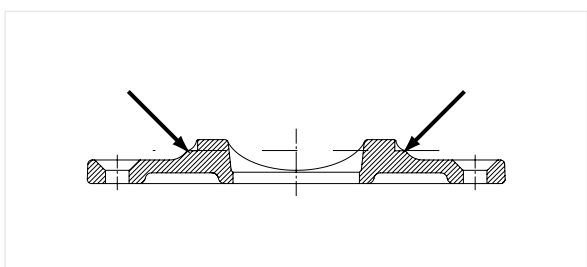
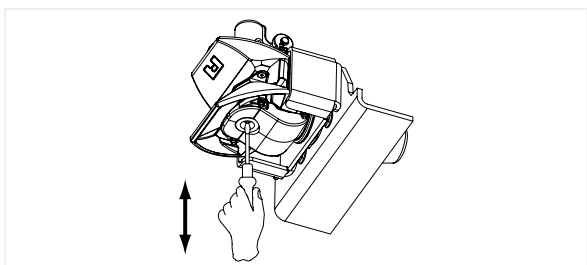
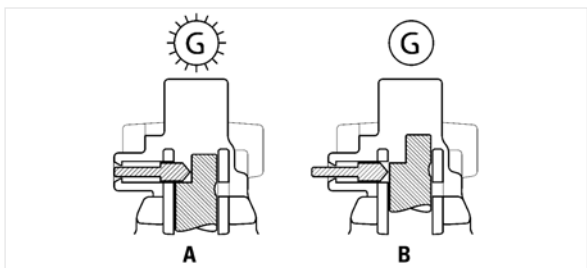
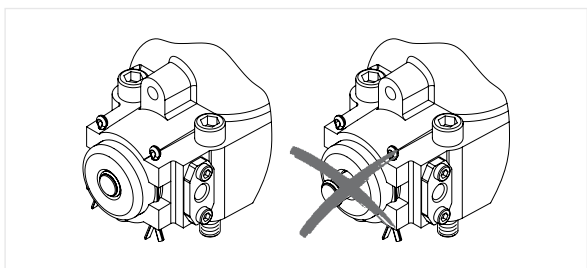
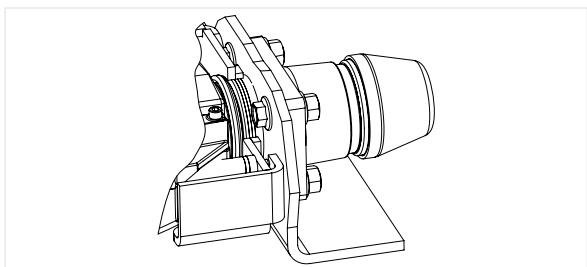
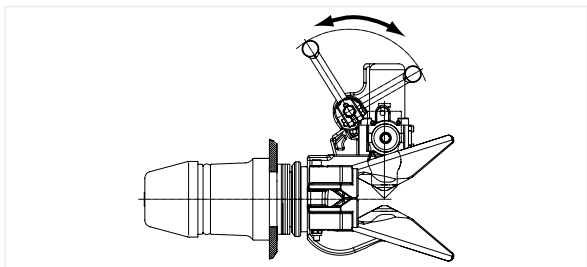
ROCKINGER



Service checklist for ROCKINGER towing hitch

Driver checks

The driver should check that the coupling is free from visible defects, i.e. missing parts, cracked or broken parts etc. These checks should be carried out each time before the coupling is used.

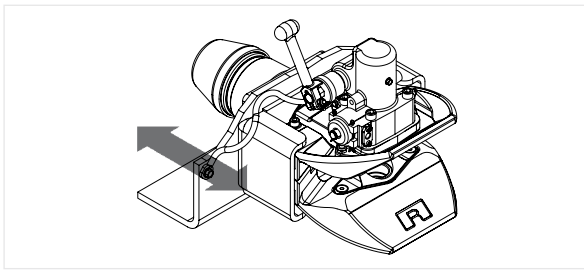


- 1** Close coupling before cleaning with high-pressure washers.
- 2** Clean all parts, visually inspect and if damaged repair or replace.
- 3** Check that the connection bolts are present, secure and correctly torqued.
- 4** Ensure that the Coupling operates correctly, i.e., opens and closes with all safety features fully effective.
- 5** Safety pin must be flush with guide bush (the proper function of the remote indicator must be checked – if the safety pin is flush with guide bush it must light green)

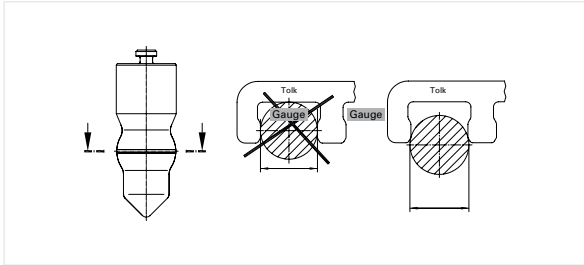
Function test from remote display and control pin:

- A** Coupling is closed and secured: control pin is flush with its housing.
- B** Coupling is not closed: indicator lamp is not illuminated, control pin is protruding.
- 6** Check lower bush for dirt & blockage.
- 7** Passage below pin must be free.

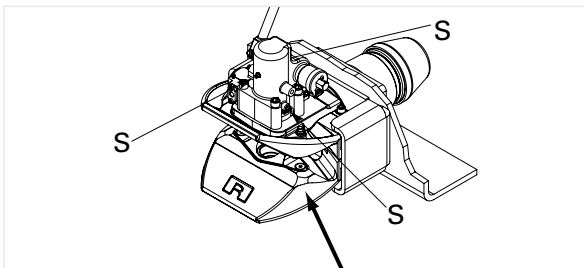
- 8** The support ring for the drawbar eye must be replaced when due to wear, the drawbar eye can contact the lower bush or when the height is flush to the marks (→). The lower bush must not be damaged under any circumstances as this will impair closure of coupling! Take care to prevent risk of accident! Always grease support ring to reduce wear (please consult repair leaflet, available on request, for details of replacing).



- 9** Bearing:
Longitudinal play
- Move coupling head (not funnel) vigorously in direction of travel when unhitched: No longitudinal play may be present.



- 10** Coupling pin:
- Diameter of crowned part may not be less than 55 mm. Otherwise new coupling pin must be used.
 - Maximum vertical play on coupling pin is 1.8 mm.

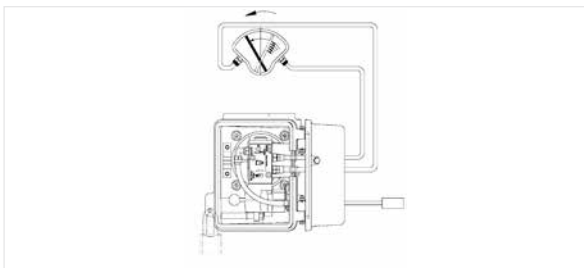


- 11** After cleaning regrease coupling pin and support.

Note: Only lightly grease.

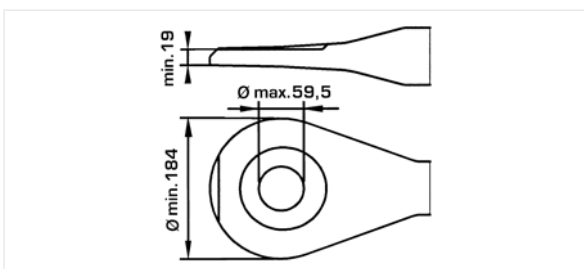


ROE-96047



Pneumatic air operation

- 1** No air leaks from control valve, air pipes or actuator.
- 2** Control valve is working.
- 3** Check lever and safety pin operation.

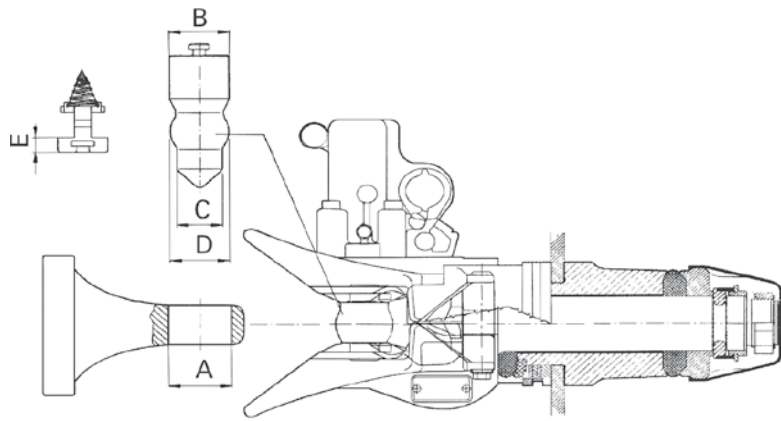


Drawbar eye

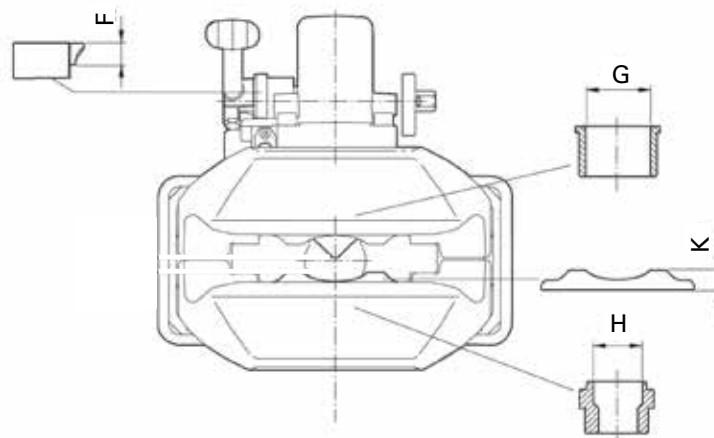
- 1** Worn deformed and damaged bushes must be immediately replaced with new ones welding on/at the bush is not allowed.
- 2** When the wear limit on the drawbar eye has been reached, it must be replaced.
- 3** Check the underside of the eye for damage and wear.

Description of defects requiring immediate attention: Repair or replace

- | | |
|--|---|
| 1 Weld cracked on draw bar, or nut loose. | 4 Safety device missing or not operative.. |
| 2 Draw bar eye deformed, cracked or excessively worn. | 5 Cracked funnel, cracked x members. |
| 3 Locking device missing, inadequate, damaged or ill-fitting. | 6 Bent handle, bent funnel. |



| Dimension | Reference gauge Part no. | Explanation | Waer limit (mm) | Safety check every 6 – 8 weeks | Waer check every 6 month |
|-----------|--------------------------|---|-----------------|--------------------------------|--------------------------|
| A | 58 243 | Drawbar eyes | ∅ 59,5 | ✓ | ✓ |
| B | 58 243 | Coupling pin in the upper guide bushing | ∅ 57 | ✓ | ✓ |
| C | 58 243 | Coupling pin in the lower guide bushing | ∅ 42,5 | ✓ | ✓ |
| D | 58 243 | Coupling pin in drawbar eye | ∅ 55 | ✓ | ✓ |
| E | 58 243 | Guide for coupling pin | 16,6 | ✓ | ✓ |



| Dimension | Reference gauge Part no. | Explanation | Waer limit (mm) | Safety check every 6 – 8 weeks | Waer check every 6 month |
|-----------|--------------------------|------------------------|-----------------|--------------------------------|--------------------------|
| F | 58 245 | Locking pin | 19 | ✓ | ✓ |
| G | 58 245 | Upper bushing | ∅ 59,5 | ✓ | ✓ |
| H | 58 245 | Lower bushing | ∅ 45,7 | ✓ | ✓ |
| K | | Support bottom and top | 15,3 | ✓ | ✓ |