

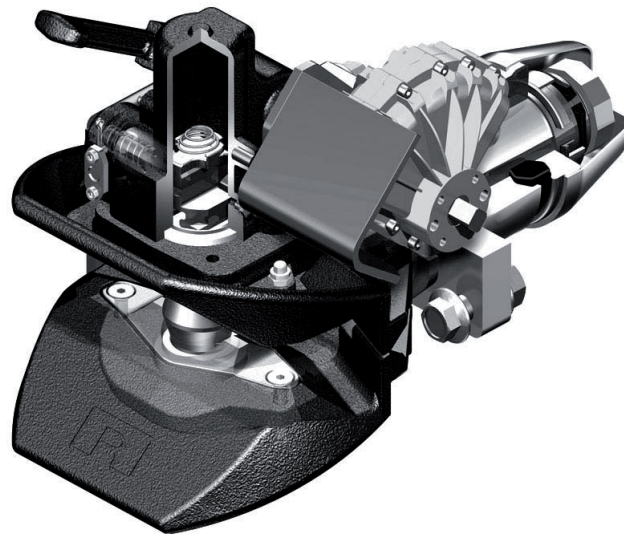
# RO★57



Reparaturanleitung | Repair instructions | Reparationsvejledning | Reparationsanvisning | Руководство по монтажу

## ROE71153

- Ⓛ Sicherung
- ⓖⓑ Locking device
- ⓓⓀ Sikring
- Ⓢ Låsindikator
- ⓇⓊⓈ Предохранитель



## Locking device

### Requirements

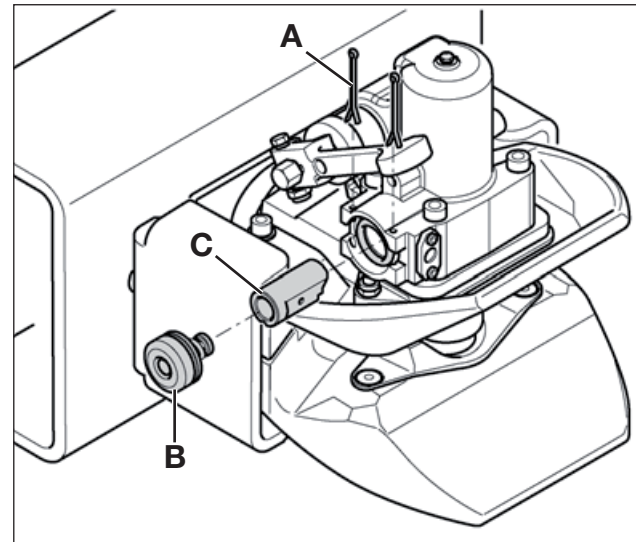
- Machine is depressurized (only in coupling with pneumatic remote control)

### TOOLS:

- Mechanics pliers

### Disassembly

- Remove splints [1A]
- Remove cover with display pin [1B]
- Remove locking pin [1C]



- [1] **A** Splint  
**B** Cover  
**C** Locking pin

## Installation

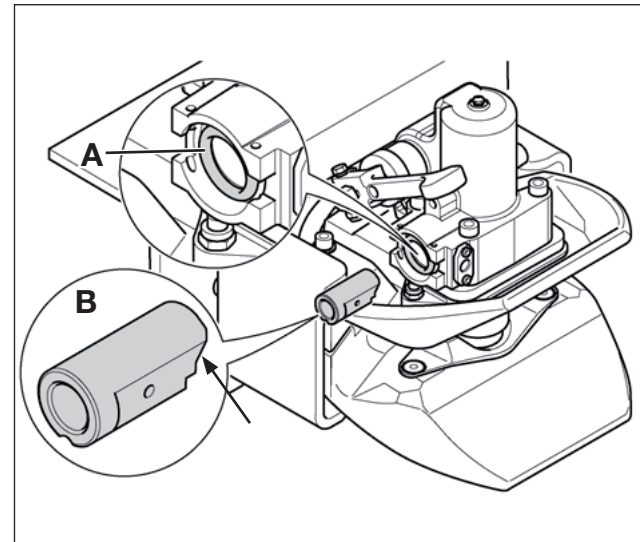
Installation is in opposite order. During this process, please do the following:

- Replace O-ring [2A]
- Lubricate locking pin and buffer before installation



### LUBRICANTS:

- Special lubricant (ROE 96 041), included in the contents of the lock spare part shipment
- Only use the supplied lubricant (danger of gumming and safety failure)
- Check the correct installation position of the locking pin: Canted surface downward [2B, arrow]
- Install new splints [1A]
- Protect splints from falling out: Bend splint ends upward



- [2] **A** O-ring  
**B** Locking pin with chamfer (arrow)



Technische Änderungen vorbehalten.  
Aktuelle Informationen finden Sie unter:  
[www.jost-world.com](http://www.jost-world.com)

Technical modifications reserved.  
For up-to-date information, please visit:  
[www.jost-world.com](http://www.jost-world.com)

Tekniske endringer kan forekomme!  
Før senest information, se:  
[www.jost-word.com](http://www.jost-word.com)

Förbehåll för tekniska ändringar!  
För senaste information, se:  
[www.jost-world.com](http://www.jost-world.com)

Мы сохраняем за собой право вносить  
технические изменения. Актуальную  
информацию смотрите по адресу:  
[www.jost-world.com](http://www.jost-world.com)

JOST-Werke  
Siemensstr. 2  
D-63263 Neu-Isenburg  
Telefon +49(0)61 02295- 0  
Fax +49(0)61 02295-298  
[www.jost-world.com](http://www.jost-world.com)