



Montage- und Betriebsanleitung

D

Installation and operating instructions

GB

Instructions de montage et d'utilisation

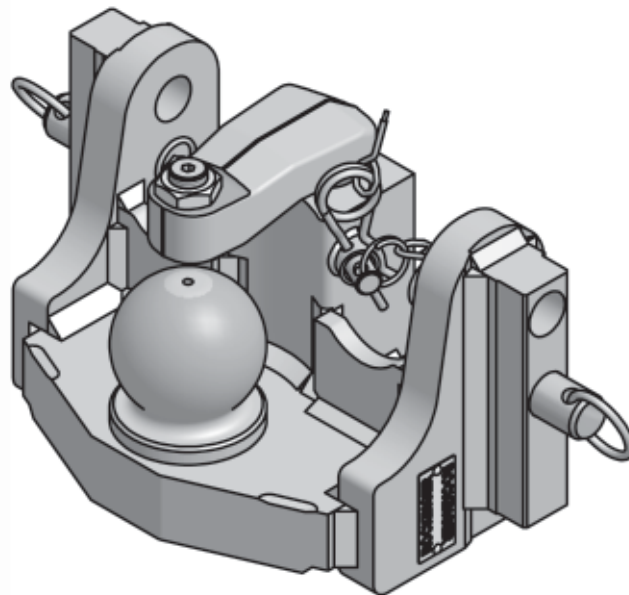
F

Member of JOST-World

Für Modellreihen
for Series
pour les séries

RO*825 A

Manuelle Kugelkupplung
Non-automatic ball coupling
Attelage à boule verrouillage manuel



Series RO*825A Non-automatic ball coupling

Ball system 80 mm

Type 825 A 30 Version A

EC-nº. e1*010492 General Model Approval (ABG): M 10025



The assembly and operating instructions must be kept in the vehicle!



The coupling may only be fitted by qualified personnel!

Read these instructions carefully before starting work!

Note:

When fitting the trailer coupling the Council Directive 89/173 EEC and the relevant national regulations must be observed. The coupling must be fitted in accordance with these assembly and operating instructions.

If the installation of the trailer coupling should alter the load values of the vehicle (e.g. permissible axle load, total weight, permissible vertical load) the vehicle documents must be altered accordingly.

We reserve the right to make technical alterations.

Safety instructions 14

1. Fitting 15 – 16

2. Operating 17

2.1 Hitching 17

2.2 Unhitching 17

3. Maintenance 18

4. Technical data 19 – 20

Upgrade kit for power steering 21 – 22





The safety instructions are summarised in a single chapter. In any situation where the user of the trailer coupling is at risk, the safety instructions are repeated in the individual sections and marked with the warning symbol shown here.

When handling trailer couplings, tractor vehicles and trailers, the relevant safety regulations in the respective country must be observed. Any safety instructions in the operating manual of the tractor vehicle and the trailer remain valid and must be observed.

For operation, maintenance and assembly, the safety instructions listed below must be observed. Further safety instructions are then given in the individual case which relate directly to the respective activity.

Safety instructions for operation

- The trailer coupling may only be operated by authorised persons.
- The installation and operating instructions of the respective trailer coupling retain their validity and must be observed.
- Only use the trailer coupling and the calotte of the trailer if they are in perfect technical condition.
- Only carry out hitching / unhitching operations on firm, level ground.
- During hitching, nobody may stand between the tractor vehicle and the trailer.
- After every hitching operation, the correct locked status of the trailer coupling must be checked by means of the control pin or the remote indicator. Only drive the rig in the correctly locked status
- **Never reach into the opened coupling.**

Safety instructions for maintenance

- For maintenance work, only use the specified lubricants.
- Maintenance work may only be carried out by qualified personnel.

Safety instructions for installation

- Installation may only be carried out by authorised workshops.
- Installation must be carried out in compliance with the relevant accident prevention regulations and the technical regulations for mechanical equipment.
- Only original ROCKINGER components may be used. .
- Instructions and installation guidelines of the vehicle manufacturer must be observed, e.g. type of fastening, clearances etc.
- All screwed connections must be tightened with the prescribed tightening torque.
- Work may only be carried out on the trailer coupling when it is closed.
- **Risk of injury!**
- The trailer coupling must be installed in accordance with these installation and operation instructions and may only be carried out on agricultural or forestry tractor machines in accordance with Directive 74/150/EEC.
- Type plates and warnings must be clearly visible before the coupling or drawbar eye are used and must not be rendered illegible in any way. Paint residues or protective foils must be removed.



Trailer couplings are vehicle connection parts which require model approval and are subject to the highest safety requirements.

Alterations of any kind shall cause the warranty to lapse and invalidate the model approval, which in turn invalidates the vehicle operation permit.

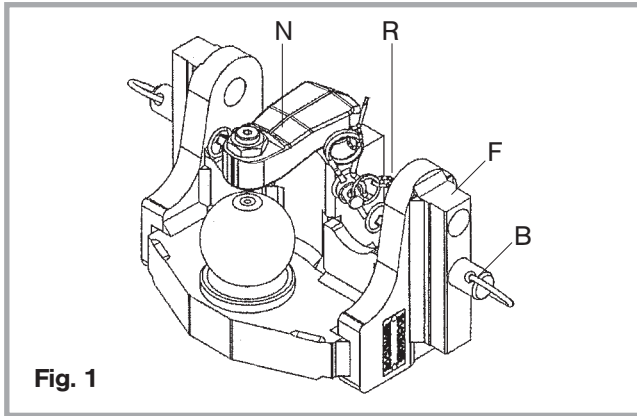


Fig. 1

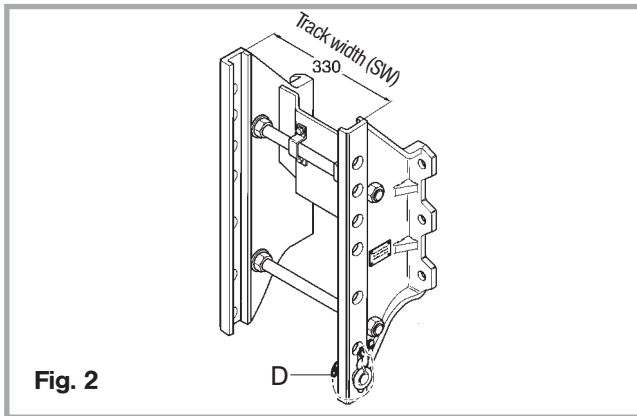


Fig. 2

1. Fitting

The ball coupling is supplied in a ready-to-use condition.

- Observe the relevant regulations.
- Remove locking pin (D, see fig. 2) as necessary
- Remove linchpin and pin (B).
- Place the ball coupling in the guide rails of the drawbar.

Attention: Hold the ball coupling with a firm grip. **Risk of accident!**

- Fix the ball coupling at the desired height with the pins (B) on the left and right.
- Secure the ball coupling with the linchpins on the left and right.

Note: The guide rail (F) of the ball coupling may not project beyond the guide rails of the drawbar.

(Exception: Fendt drawbar – see Fendt Operating Instructions)

The ball coupling can also be fitted above the power take-off shaft (overhead suspension). Observe the instructions of the tractor manufacturer for the permissible vertical load (generally 2 t).

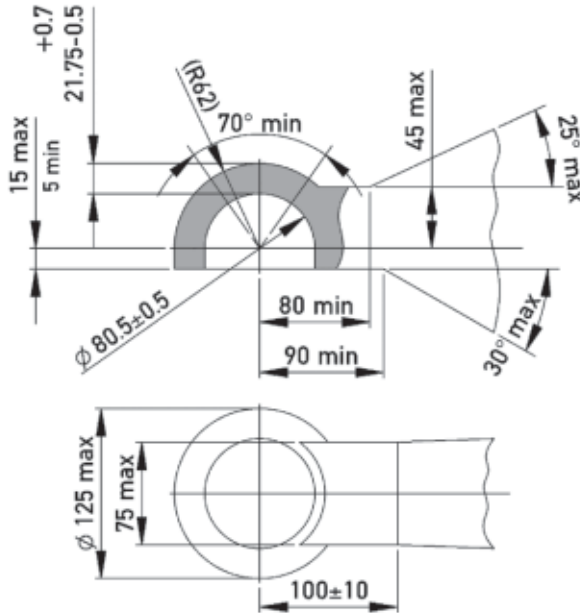


Fig. 3

Note:

Only approved for hitch heads (Fig. 3) with General Model Approval (ABG) no.: M9614, M9615, M9622, M9625, M9679, M9680, M9685 and ISO 24347

The hitch heads (see Fig. 2) can reach 2 swivel angles simultaneously, e.g.:

- horizontal 60° / vertical 20°
- horizontal 60° / axial 20°

At horizontal swivel angles up to $\pm 30^\circ$ ROCKINGER hitch heads, e.g. types 59343 and 59344 allow a vertical swivel angle up to $\pm 28^\circ$.

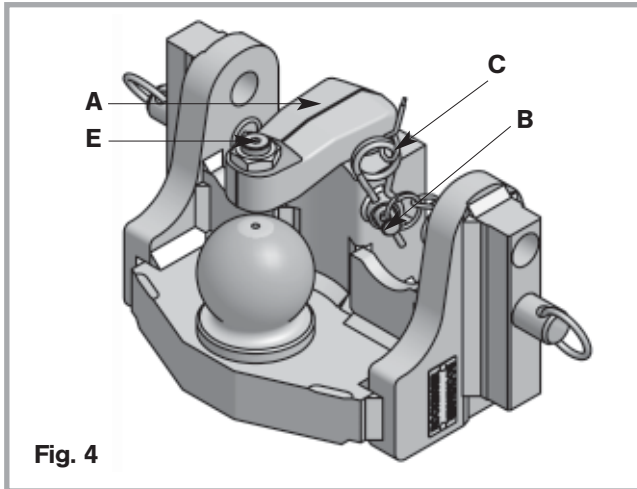


Fig. 4

2. Operation

The versions **A** to **C** differ only in terms of the bolting hole pattern. The operation is the same in all versions. The coupling has a bolt-locked latch.

For hitching and unhitching, the regulations of the relevant authorities must be observed.

2.1 Hitching

No personnel may be standing between the vehicles! **Risk of accident!**

- Remove the locking bolt (**B**) (see Fig. 7).
- Lift the latch (**A**) and turn to the side.
- Place the towbar over the ball.
- Lower it using a suitable device.
- Turn the latch (**A**) to the front over the ball or towbar and slide in the locking bolt (**B**) and secure it with the spring cotter (**C**).

2.2 Unhitching

- Secure the trailer against rolling away or extend the support feet.
- Remove the spring cotter (**C**) (see Fig. 7).
- Remove the locking bolt (**B**) (see Fig. 7).
- Pull the latch (**A**) upwards and turn to the side.
- Use a suitable device to lift the towbar.
- Move the tractor vehicle forwards.

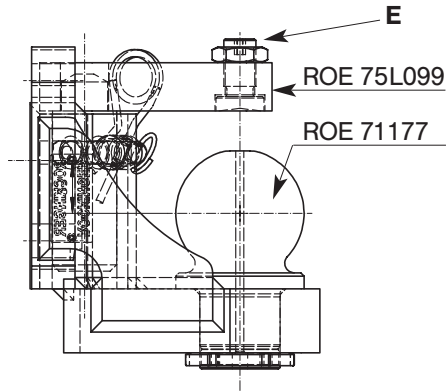


Fig. 5

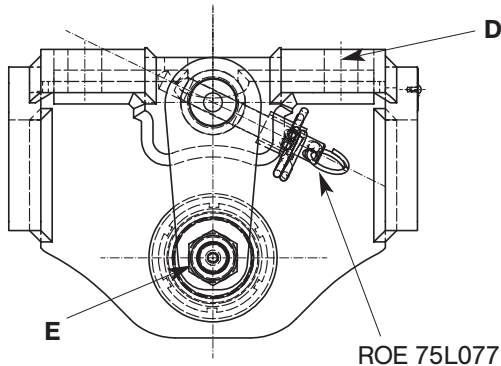


Fig. 6

3. Maintenance

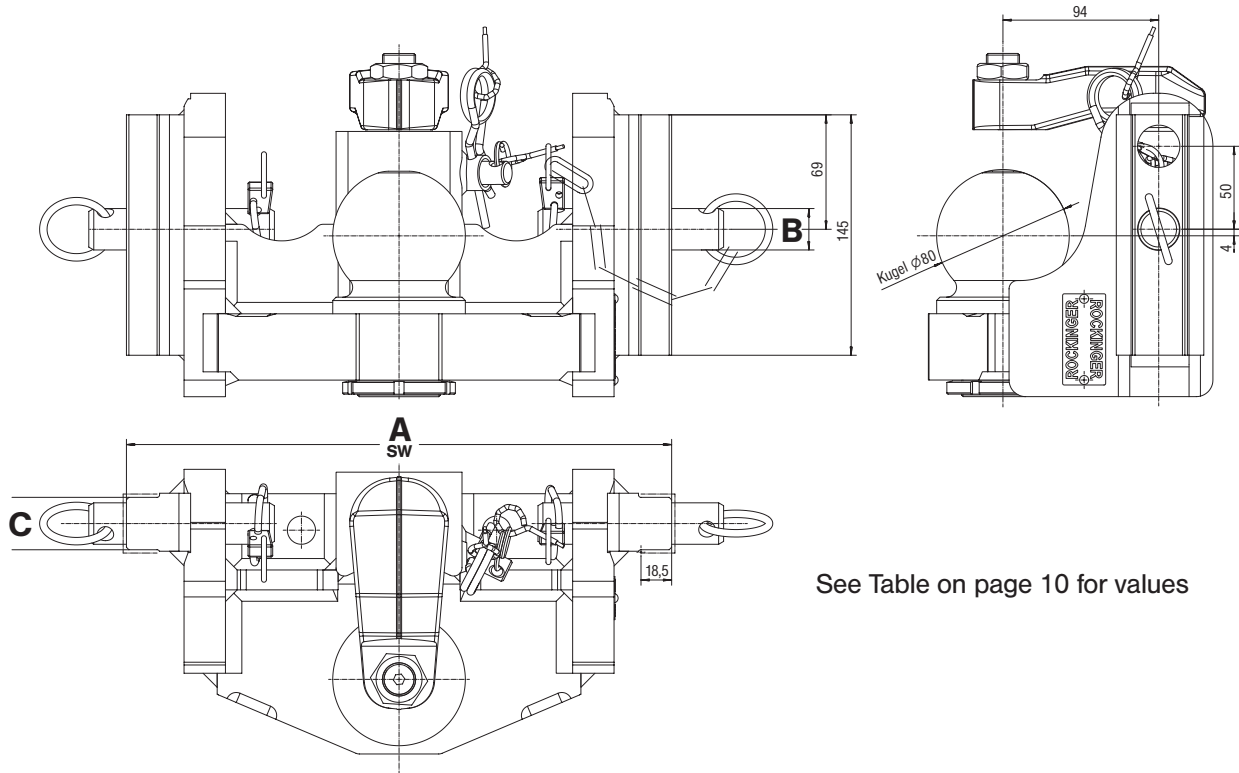
Ball coupling, hitch head

- To reduce the wear and tear on the ball coupling and towbar, lubricate the contact surfaces with multipurpose grease at regular intervals depending on the deployment conditions and after cleaning with high-pressure washers.
- Lubricate the contact surfaces at the lubrication point on the hitch head or via the central lubrication system. If there is no lubrication point on the hitch head, the lubrication nipple order no. 65018 must be fitted to the underside of the ball and used for lubrication.
- When the ball wears below 78.5 mm, it must be replaced. Only replace the ball twice at the most, then fit a new ball coupling.

Repairs may only be carried out by a qualified workshop!

Works steps to replace the ball:

- Remove the slotted nut.
- Press out the ball from below – Insert a new ball.
- Screw on the slotted nut: tightening torque **160 to 180 Nm**.
- Secure thread with metal adhesive (Loctite).
- The vertical play of the connected hitch head may not exceed 7mm. When the wear limit is reached, the corresponding parts (ball, latch and hitch head) must be replaced.
- At the latch with the adjustment screw (E) the vertical play for a hitched hitch head can be limited to a minimum of 0.5 mm:
 - Release the locking nut.
 - Hold the bolt (2) with gentle pressure on the upper side of the hitch head.
 - Turn back by ½ a turn.
 - Secure the nut.



See Table on page 10 for values

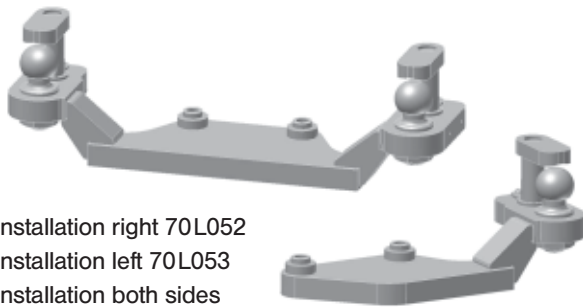
Fig. 7



- Non-automatic ball coupling \varnothing 80 mm for drawbars with various track widths
- Only for connection with hitch head 80 in accordance with ISO 24347
- Type 825 A 30 Version A
- For tractors in accordance with Guideline 89/173EC or for vehicles in accordance with § 43, section 4 of the German Road Traffic Act (StVZO)
- Can be used in suitable model-approved drawbars
- Observe the load values of the drawbars used

RO	Track width SW A,B,C (mm)	S (t)	D (kN)	ABG M	EG e1
825A1030C	310/22/30	3,0	89,3	10025	0492
825A1230C	312/22/30	3,0	89,3	10025	0492
825A2330C	323/22/30	3,0	89,3	10025	0492
825A3030C	330/25/32	3,0	89,3	10025	0492
825A3630C	336/22/30	3,0	89,3	10025	0492





Installation right 70L052
Installation left 70L053
Installation both sides
74L026

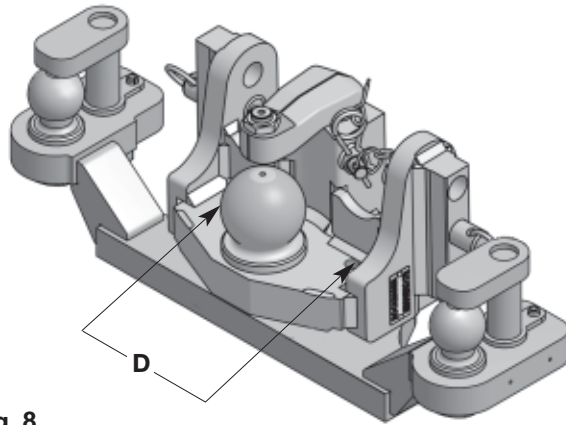


Fig. 8

Retrofit options

The ball coupling can be supplied optionally with two borings M16 (D) (see fig. 8). These are provided for the fastening of a ROCKINGER adapter for control of trailer-side power steering (e.g. RO★70L052, RO★70L053, RO★74L026).

Fitted on the right 70L052
Fitted on the left 70L053
Fitted on both sides 74L026

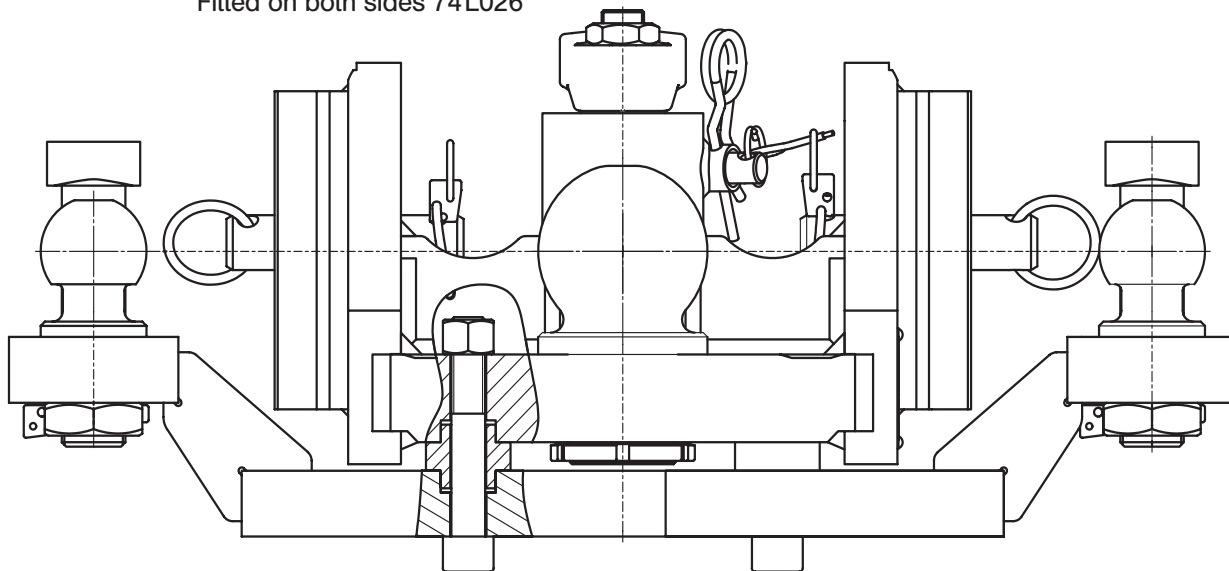


Fig. 9



JOST-Werke · Siemensstr. 2, D-63263 Neu-Isenburg · Telefon +49(0)61 02 295-0 · Fax +49(0)61 02 295-298 · www.jost-world.com

W0024-D/GB/F · 12/2011