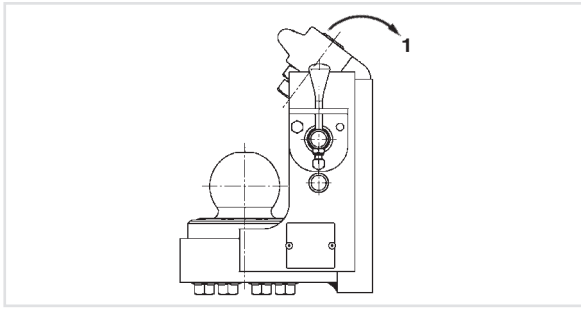
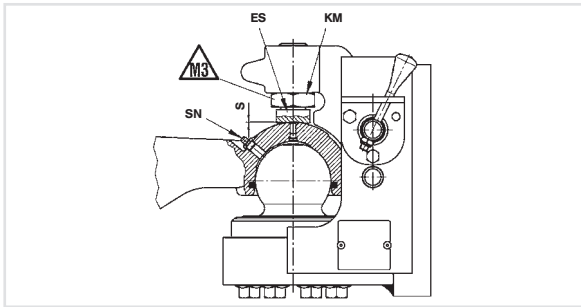


# After the CHECKS



**1** Grease the complete surface of the ball lightly with grease (use a calcium saponified, multipurpose grease EP 3). Prior to reassembly.



**2** Grease the complete groove and O-ring of the spoon lightly with grease (calcium saponified, multipurpose grease EP 3).



**3** **Lubrication grease (calcium saponified multi-purpose grease EP3)** must be applied to the coupled and secured towing eye via the lubrication nipple – (SN) until grease emerges from around the adjusting screw of the towing eye. If unable to insert grease via the grease nipple, or grease does not escape from the relief valve, uncouple tractor and trailer and check condition of relief valve (V).

We recommend **JOST High Performance Lubricant**

### Refill Kit

Item number SKE 005 670 00C

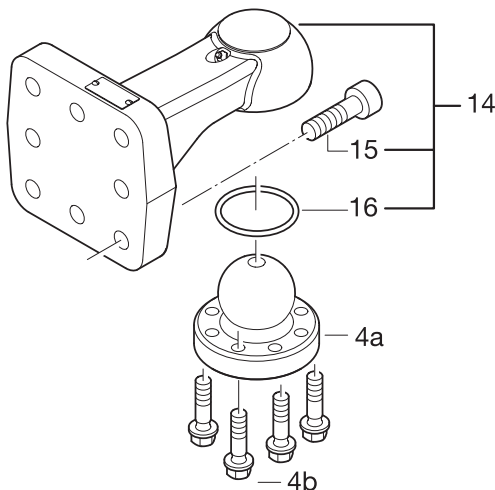
Consists of two cartridges

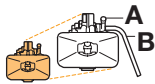

### Barrel

Item number SKE 007 090 000

Consists of 35 kg

# Spare Parts



Pos		ROE	
14		57388R	1
15		30485#8	1
16		25568	1
04		71685	1

For Further spares go to [www.jost-world.com](http://www.jost-world.com).

Or consult Catalogue

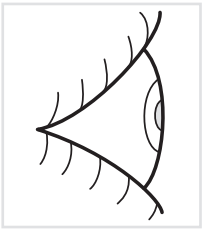
Member of **JOST**-World

JOST, Germany Tel. +49 6102 295-0, [jost-sales@jost-world.com](mailto:jost-sales@jost-world.com), [www.jost-world.com](http://www.jost-world.com)

# RO★KU 80

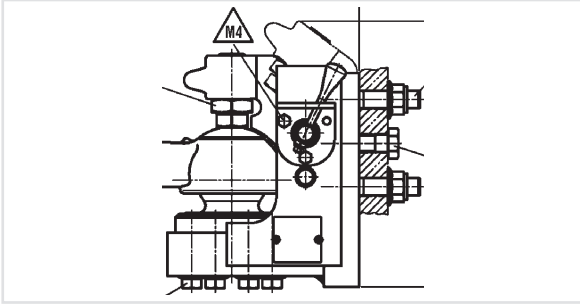


## Ball Coupling System Service Checklist



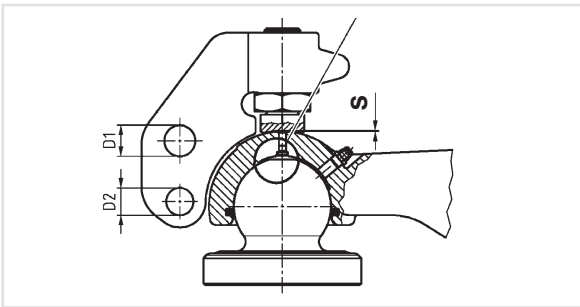
# Visual safety and lubrication check

The ball hitch should be checked, to determine if it is free from visible defects, ie missing parts, cracked or broken parts etc. These checks should be carried out each time in service.

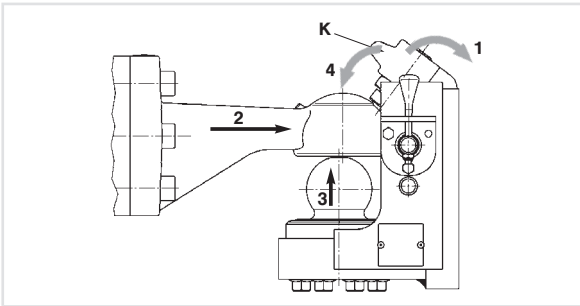


**1** Clean all parts, visually inspect and if damaged repair or replace.

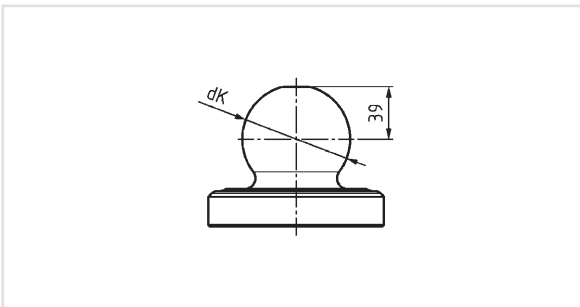
**2** Check that the mounting bolts are present, secure and correctly torqued.



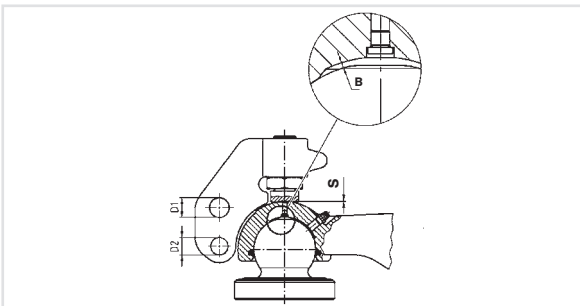
**3** Check the **gap S** between holder and spoon. If it is more than 0.5+0.3 mm re-adjust with adjustment screw.



**4** Ensure that the Coupling operates correctly, ie, opens and closes with all safety features fully effective (see also mounting instruction).



**5** To check the wear of the ball you have to measure the ball diameter (dk) as shown. When the main diameter has worn down to **79.0 mm** the ball must be replaced.

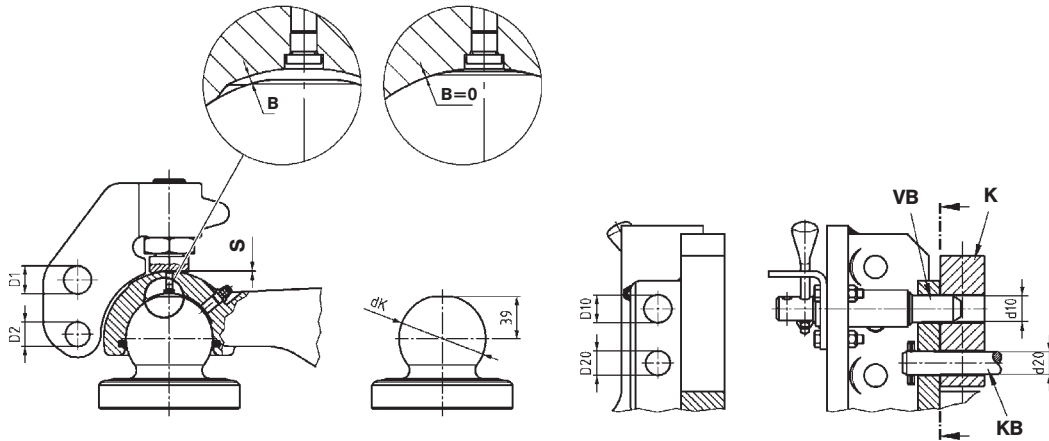


**1** Worn deformed and damaged spoons must be immediately replaced with new ones welding on/at the spoon is not allowed.

**2** **B** | = 0 **Replace towing eye**

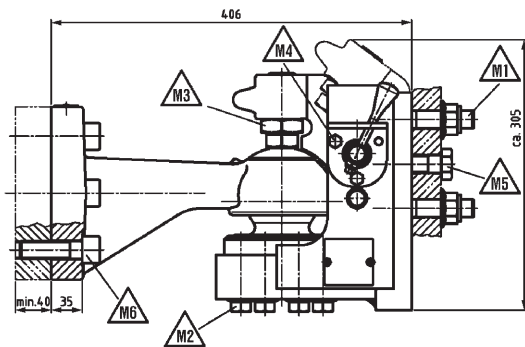
**3** Clean and check the condition of O-Ring, if damaged replace.

# Wear limits – Check intervals



Dimension	Wear Limit (mm)	Visual inspection check every 6-8 weeks	Wear check every 6 month
dk	ø 79.0		✓
B	= 0		✓
S	0.5+0.3mm	✓	✓
D1	ø 26.5		✓
D2	ø 23.5		✓
D10	ø 26.5		✓
D20	ø 23.5		✓
d10	ø 23.8		✓
d20	ø 21.0		✓

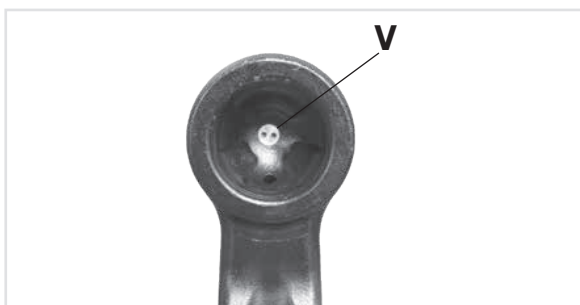
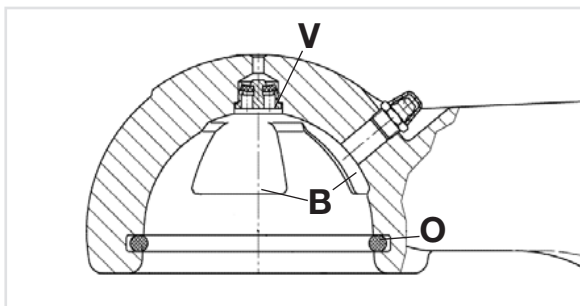
ø-datas in mm



	Tightening Torque (Nm) (for $\mu = 0,12$ )	Thread size (mm)	Wear check every 6 month
M1	600 + 20	M20x1.5-10.9	✓
M2	365 + 25	M16 - 12.9	✓
M3	300 + 25	M30 - 8.8	✓
M4	25 + 3	M8 - 8.8	✓
M5	380 + 20	M20 - 8.8 <sup>1</sup>	✓
M6	560 + 20	M20x1.5-10.9 <sup>1</sup>	✓

All screws tightened with torque wrench!

<sup>1</sup> Nut thread material steel > 500 N/mm<sup>2</sup>



## Spoon – Wear check

If the internal bearing surface (B) is completely flush with the ground surface. The Spoon requires replacing.

Clean and check the condition of O-Ring (O), If damaged replace.

Clean and check the condition of Valve (V), The two bore must visible and not damaged